



TRIANGLE BRASS MANUFACTURING COMPANY, INC.

### **Fine Builders Hardware**

3528 Emery Street, P.O. Box 23277  
Los Angeles, California 90023, U.S.A.  
Telephone (323) 262-4191  
Fax (323) 264-7214 or (800) 637-TRIM (8746)  
Or For Quotes – Toll Free Fax (877) 786-8387  
Online Ordering available at [www.trimcobbw.com](http://www.trimcobbw.com)

© 2003, Triangle Brass Manufacturing Company, All rights reserved.



## INDEX of FACTORY REPS by STATE

| <u>State</u>         | <u>Sales Agencies</u>            | <u>Factory Contact - extension</u> |
|----------------------|----------------------------------|------------------------------------|
| Alabama              | BelcherSouth Marketing, Inc.     | Jorge Castellanos - 113            |
| Alaska               | Hughes Agency, Inc.              | Estella Godinez - 126              |
| Arizona              | The Clark Agency                 | Estella Godinez - 126              |
| Arkansas             | Moran Sales Associates           | Jorge Castellanos - 113            |
| California, Northern | ASR Sales                        | Daniel Ayala - 124                 |
| California, Southern | Brownell & Associates            | Daniel Ayala - 124                 |
| Colorado             | Brad Steele & Associates         | Estella Godinez - 126              |
| Connecticut          | Hardware Services, Inc.          | Jorge Castellanos - 113            |
| Delaware             | AccesAbility Sales & Marketing   | Jorge Castellanos - 113            |
| Florida              | JP Nunn Sales Group, Inc.        | Jorge Castellanos - 113            |
| Georgia              | L & T Associates, Inc.           | Jorge Castellanos - 113            |
| Hawaii               | ASR Sales                        | Daniel Ayala - 124                 |
| Idaho, Northern      | Hughes Agency                    | Estella Godinez - 126              |
| Idaho, Southern      | Brad Steele & Associates, Inc.   | Estella Godinez - 126              |
| Illinois             | Waggoner-Brenia Associates       | Jorge Castellanos - 113            |
| Indiana              | dbg Associates, Inc.             | Jorge Castellanos - 113            |
| Iowa                 | Heartland Sales Agency           | Estella Godinez - 126              |
| Kansas               | Heartland Sales Agency           | Estella Godinez - 126              |
| Kentucky             | dbg Associates, Inc.             | Jorge Castellanos - 113            |
| Louisiana            | Moran Sales Associates           | Jorge Castellanos - 113            |
| Maine                | Hardware Services, Inc.          | Jorge Castellanos - 113            |
| Maryland             | Mid-Atlantic Agents, Ltd.        | Jorge Castellanos - 113            |
| Massachusetts        | Hardware Services, Inc.          | Daniel Ayala - 124                 |
| Michigan             | Rittner-French Associates        | Estella Godinez - 126              |
| Minnesota            | Combs & Associates, Inc.         | Estella Godinez - 126              |
| Mississippi          | Moran Sales Associates           | Jorge Castellanos - 113            |
| Missouri, Western    | Heartland Sales Agency           | Estella Godinez - 126              |
| Missouri, Eastern    | Please Contact Factory           | Estella Godinez - 126              |
| Montana              | Brad Steele & Associates         | Estella Godinez - 126              |
| Nebraska             | Heartland Sales Agency           | Daniel Ayala - 124                 |
| Nevada, Northern     | ASR Sales                        | Daniel Ayala - 124                 |
| Nevada, Southern     | Brownell & Associates            | Daniel Ayala - 124                 |
| New Hampshire        | Hardware Services, Inc.          | Jorge Castellanos - 113            |
| New Jersey, Northern | Please Call Factory              | Jorge Castellanos - 113            |
| New Jersey, Southern | AccesAbility Sales & Marketing   | Jorge Castellanos - 113            |
| New Mexico           | The Clark Agency                 | Estella Godinez - 126              |
| New York, Southern   | Please Contact Factory           | Jorge Castellanos - 113            |
| New York, Metro      | Greico Glezen Sales & Consulting | Jorge Castellanos - 113            |
| New York, Northern   | Please Contact Factory           | Jorge Castellanos - 113            |
| North Carolina       | Southpaw Marketing Group         | Jorge Castellanos - 113            |
| North Dakota         | Combs & Associates               | Estella Godinez - 126              |

## INDEX of FACTORY REPS by STATE (cont.)

| <u>State</u>          | <u>Sales Agencies</u>          | <u>Factory Contact - extension</u> |
|-----------------------|--------------------------------|------------------------------------|
| Ohio                  | Please Contact Factory         | Jorge Castellanos - 113            |
| Oklahoma              | Robert Thomas & Associates     | Daniel Ayala - 124                 |
| Oregon                | Hughes Agency                  | Estella Godinez - 126              |
| Pennsylvania, Western | Please Contact Factory         | Jorge Castellanos - 113            |
| Pennsylvania, Eastern | AccesAbility Sales & Marketing | Jorge Castellanos - 113            |
| Rhode Island          | Hardware Services, Inc.        | Jorge Castellanos - 113            |
| South Carolina        | Southpaw Marketing Group       | Jorge Castellanos - 113            |
| South Dakota          | Combs & Associates, Inc.       | Estella Godinez - 126              |
| Tennessee             | Moran Sales Associates         | Jorge Castellanos - 113            |
| Texas                 | Robert Thomas & Associates     | Daniel Ayala - 124                 |
| Utah                  | Brad Steele & Associates       | Estella Godinez - 126              |
| Vermont               | Hardware Services, Inc.        | Jorge Castellanos - 113            |
| Virginia              | Mid-Atlantic Agents, Inc.      | Jorge Castellanos - 113            |
| Washington            | Hughes Agency                  | Estella Godinez - 126              |
| Washington, DC        | Mid-Atlantic Agents, Inc.      | Jorge Castellanos - 113            |
| West Virginia         | Please Contact Factory         | Jorge Castellanos - 113            |
| Wisconsin, Eastern    | Waggoner-Brenia Associates     | Estella Godinez - 126              |
| Wisconsin, Western    | Combs & Associates, Inc.       | Estella Godinez - 126              |
| Wyoming               | Brad Steele & Associates       | Estella Godinez - 126              |
| Mexico                | JJ Solorio, Inc.               | Jorge Castellanos - 113            |
| Quebec, Canada        | Les Agences Real Demers        | Estella Godinez - 126              |
| Canada, Western       | Penn-Pacific Agency            | Estella Godinez - 126              |
| Europe                | Don Tucker (International)     | Jorge Castellanos - 113            |
| Far East              | Don Tucker (International)     | Jorge Castellanos - 113            |
| Central America       | Don Tucker (International)     | Jorge Castellanos - 113            |
| South America         | Don Tucker (International)     | Jorge Castellanos - 113            |
| Middle East           | Don Tucker (International)     | Jorge Castellanos - 113            |

The hardware shown on these pages is made with no compromise in quality, design or durability. Only first quality extrusions, sheet stock and castings are used. Careful matching, polishing, assembly and finishing result in a final product which we present with pride.

## INDEX by Product

|   |  |
|---|--|
| Anti-Vandal Lock Guard                  | G-6  |
| Anti-Vandal Trim                        | D-4  |
| “Adjustre” Door Holder                  | F-8  |
| Armor Plates                            | G-8  |
| Back Plates                             | D-1  |
| Cane Bolt                               | C-1  |
| Closet Ball Catch                       | C-1  |
| Concealed Door Pull                     | D-5  |
| Coordinators and Accessories            | C-4, C-5   |
| Crash Chain Stop                        | G-6  |
| Cremone Bolt                            | C-9  |
| Decal Signage                           | G-3  |
| Door Grille – Classic                   | B-2  |
| Door Guards                             | G-6  |
| Door Pulls                              | B-1 – B-3, B-5, B-6, B-8, D-2 – D-4, D-6 – D-12, E-1 |
| Door Pull – Classic                     | B-1 – B-3  |
| Door Pull – Offset Entrance             | D-9, D-10  |
| Drawer Pulls                            | D-1  |
| Dubl-Bolt                               | C-6  |
| Dust Proof Strike                       | C-7  |
| Dutch Door Bolt                         | C-8  |
| Edge Guards                             | G-9  |
| Entrance Handle – Classic               | B-1 – B-3  |
| Escutcheon – Classic                    | B-2  |
| Fasteners                               | 3  |
| Finger Guard                            | G-9  |
| Finish Kits – Automatic Flushbolts      | C-6  |
| Fire Bolt                               | C-8  |
| Flush Pulls                             | D-5, D-6, D-7  |
| Flush Pulls – Spindle Type              | D-6  |
| Flushbolt – Corner Manual               | C-8  |
| Flushbolts – Manual                     | C-7, C-9   |
| Flushbolts – Automatic & Semi-Automatic | C-6  |
| Focal – Contemporary Hardware           | Focal-1, Focal-2                                     |

## INDEX by Product

|  |                                       |
|--|---------------------------------------|
| Grip – Classic                         | B-1, B-2                              |
| Grips                                  | D-7, D-8, D-9, D-10, D-12             |
| Guides – Flushbolt                     | C-8                                   |
| Handrail Brackets                      | G-5                                   |
| Holders                                | F-1, F-2, D-3, F-4, F-5 F-6, F-8, F-9 |
| Hooks – Coat and Hat                   | G-4                                   |
| Hospital Grips                         | D-8                                   |
| Hospital Latches                       | C-3                                   |
| Indicators for Lock Sets               | G-1                                   |
| Indicator Plates                       | G-2                                   |
| Kick Plates                            | G-8                                   |
| Knockers                               | G-4                                   |
| Latch Guards (Including Anti-Vandal)   | G-6                                   |
| Lock Astragals                         | G-6                                   |
| Mail Plates and Accessories            | G-3                                   |
| MasterCraft, Entry Pulls               | B-6, B-7, B-8                         |
| Mitey Lok – Sliding Glass Locks        | C-1                                   |
| Modern Masterpieces, Entry Pulls       | B-4, B-5                              |
| Mountings                              | 3                                     |
| Pipe Adapter for Wall Strikes          | F-4                                   |
| Pipe Adapter Strike                    | F-6                                   |
| Plate Anchor                           | F-6                                   |
| Pocket Door Pulls                      | D-5                                   |
| Pull Plates – Classic                  | B-1, B-2, B-3                         |
| Pull Plates                            | B-1, B-2, B-3, D-2, D-3, D-4, D-11    |
| Pulls                                  | D-7, D-8, D-10, D-12                  |
| Push Bars, Sets                        | E-1, E-2, E-3, E-4                    |
| Push Plates                            | D-2, D-4, D-11                        |
| Push Plates – Classic                  | B-1, B-2, B-3                         |
| Push Pull Latches (Hospital Latch)     | C-3                                   |
| Restroom Signs                         | G-1, G-2                              |
| Risers                                 | F-2, F-5                              |
| Roller Latches                         | C-1, C-2                              |
| Signage – Engraved                     | G-3                                   |
| Silencers                              | F-4                                   |
| Spacers, Nylon                         | G-6                                   |
| Special Plates                         | G-7                                   |
| Stops                                  | F-1, F-2, F-3, F-4, F-5, F-8, F-9     |
| Stretcher Plates                       | G-8                                   |
| Strikes                                | C-2                                   |
| Surface Bolts                          | C-8, C-9                              |
| Tuflok – Anti-Vandal External Hardware | D-4                                   |
| Viewers                                | G-4                                   |
| Universal Dome Stop                    | F-2                                   |
| Unit Lock Retrofit Kit                 | G-6                                   |
| Wall Bumpers                           | F-7, F-8                              |

# INDEX by TRIMCO NUMBER

| TRIMCO NUMBER | DESCRIPTION          | DESIGNATION/<br>PATENT | PAGE |
|---------------|----------------------|------------------------|------|
| BP1           | BACK PLATE FOR PULLS |                        | D1   |
| BP2           | BACK PLATE FOR PULLS |                        | D1   |
| BP3           | BACK PLATE FOR PULLS |                        | D1   |
| BP4           | BACK PLATE FOR PULLS |                        | D1   |
| ML2C          | MITEY LOCK/NO KEY    |                        | C1   |
| ML4M          | MITEY LOCK/KEY       |                        | C1   |
| 15            | CLASSIC PUSH PLATE   |                        | B1   |
| 16            | CLASSIC PULL PLATE   | ADA                    | B1   |
| 17            | CLASSIC PUSH PLATE   |                        | B1   |
| 18            | CLASSIC PULL PLATE   | ADA                    | B1   |
| 35            | CLASSIC DOOR PULL    | ADA                    | B1   |
| 50            | CLASSIC PUSH PLATE   |                        | B1   |
| 51            | CLASSIC PULL PLATE   | ADA                    | B1   |
| 57            | CLASSIC GRIP         | ADA                    | B1   |
| 58            | CLASSIC GRIP         | ADA                    | B2   |
| 59            | CLASSIC GRIP         | ADA                    | B2   |
| 111           | ESCUTCHEON           |                        | B2   |
| 242           | STANDARD FLUSH PULL  |                        | D7   |
| 243T          | CANE BOLT/TOP        |                        | C1   |
| 244B          | CANE BOLT/BOTTOM     |                        | C1   |
| 248           | STANDARD FLUSH PULL  |                        | D7   |
| 275 (1-4)     | DRAWER PULL          |                        | D1   |
| 283           | DRAWER PULL          |                        | D1   |
| 284           | DRAWER PULL          |                        | D1   |
| 507           | RESTROOM SIGN        | ADA                    | G1   |
| 508           | RESTROOM SIGN        | ADA                    | G1   |
| 509           | RESTROOM SIGN        | ADA                    | G1   |
| 527           | RESTROOM SIGN        | ADA                    | G1   |
| 528           | RESTROOM SIGN        | ADA                    | G1   |
| 529           | RESTROOM SIGN        | ADA                    | G1   |
| 553           | DRAWER PULL          |                        | D1   |
| 562-3         | DRAWER PULL          |                        | D1   |
| 562-4         | DRAWER PULL          |                        | D1   |
| 620           | DOOR KNOCKER         |                        | G4   |
| 621           | DOOR KNOCKER         |                        | G4   |
| 625CV         | DOOR KNOCKER         |                        | G4   |
| 625CVE        | DOOR KNOCKER         |                        | G4   |
| 625V          | DOOR KNOCKER         |                        | G4   |
| 625VE         | DOOR KNOCKER         |                        | G4   |
| 751           | HANDICAP SIGN        |                        | G2   |
| 752           | RESTROOM SIGN        |                        | G2   |
| 753           | RESTROOM SIGN        |                        | G2   |
| 754           | RESTROOM SIGN        |                        | G2   |
| 755           | INDICATOR PLATE      |                        | G2   |
| 756           | INDICATOR PLATE      |                        | G2   |
| 757           | INDICATOR PLATE      |                        | G2   |
| 758           | INDICATOR PLATE      |                        | G2   |
| 760           | PLASTIC SIGN         |                        | G3   |
| 771           | DECAL SIGNAGE        |                        | G3   |
| 773           | DECAL SIGNAGE        |                        | G3   |
| 793           | ENGRAVED METAL SIGN  |                        | G3   |
| 801           | 3-WAY CATCH          |                        | C1   |
| 802           | 3-WAY CATCH          |                        | C1   |
| 803           | 3-WAY CATCH          |                        | C1   |
| 804           | 3-WAY CATCH          |                        | C1   |
| 912           | DOOR GRILLE          |                        | B2   |
| 975           | DOOR VIEWER          |                        | G4   |
| 975L          | DOOR VIEWER          |                        | G4   |
| 975U          | DOOR VIEWER          |                        | G4   |

# INDEX by TRIMCO NUMBER

| TRIMCO NUMBER | DESCRIPTION                                   | DESIGNATION/<br>PATENT | PAGE |
|---------------|---|------------------------|------|
| 976           | DOOR VIEWER 180°                              |                        | G4   |
| 976U          | DOOR VIEWER 180°                              |                        | G4   |
| 1001-1        | PUSH PLATE                                    |                        | D2   |
| 1001-2        | PUSH PLATE                                    |                        | D2   |
| 1001-3        | PUSH PLATE                                    |                        | D2   |
| 1001-9        | PUSH PLATE                                    |                        | D2   |
| 1001-11       | PUSH PLATE                                    |                        | D2   |
| 1001-3P       | PUSH PLATE                                    |                        | D2   |
| 1010-1        | PULL PLATE                                    | ADA                    | D2   |
| 1010-2        | PULL PLATE                                    | ADA                    | D2   |
| 1010-3        | PULL PLATE                                    | ADA                    | D2   |
| 1012-2        | PULL PLATE                                    | ADA                    | D2   |
| 1012-3        | PULL PLATE                                    | ADA                    | D2   |
| 1013-2        | PULL PLATE                                    | ADA                    | D3   |
| 1013-2B       | PULL PLATE                                    | ADA                    | D3   |
| 1013-3        | PULL PLATE                                    | ADA                    | D3   |
| 1013-3B       | PULL PLATE                                    | ADA                    | D3   |
| 1014-2        | PULL PLATE                                    | ADA                    | D3   |
| 1014-2B       | PULL PLATE                                    | ADA                    | D3   |
| 1014-3        | PULL PLATE                                    | ADA                    | D3   |
| 1014-3B       | PULL PLATE                                    | ADA                    | D3   |
| 1015-2        | PULL PLATE                                    | ADA                    | D3   |
| 1015-2B       | PULL PLATE                                    | ADA                    | D3   |
| 1015-3        | PULL PLATE                                    | ADA                    | D3   |
| 1015-3B       | PULL PLATE                                    | ADA                    | D3   |
| 1017-2        | PULL PLATE                                    | ADA                    | D3   |
| 1017-2B       | PULL PLATE                                    | ADA                    | D3   |
| 1017-3        | PULL PLATE                                    | ADA                    | D3   |
| 1017-3B       | PULL PLATE                                    | ADA                    | D3   |
| 1018-3        | PULL PLATE                                    | ADA                    | D4   |
| 1018-3B       | PULL PLATE                                    | ADA                    | D4   |
| 1041-4        | PUSH PLATE                                    |                        | D4   |
| 1056-4        | PULL PLATE                                    | ADA                    | D4   |
| 1059          | ROUND FLUSH CUP                               |                        | D5   |
| 1060          | FLUSH PULL                                    |                        | D5   |
| 1061          | FLUSH PULL                                    |                        | D5   |
| 1062          | CONCEALED DOOR PULL                           |                        | D5   |
| 1063          | CONCEALED DOOR PULL                           |                        | D5   |
| 1064          | POCKET DOOR PULL, PASSAGE                     |                        | D5   |
| 1064FCP       | POCKET DOOR PULL                              |                        | D5   |
| 1065CD        | POCKET DOOR PULL                              |                        | D5   |
| 1065          | POCKET DOOR PULL, PRIVACY                     |                        | D5   |
| 1065PA        | POCKET DOOR PULL                              |                        | D5   |
| 1066S         | FLUSH PULL, SPINDLE                           |                        | D6   |
| 1066S-38      | FLUSH PULL, SPINDLE                           |                        | D6   |
| 1066S-516     | FLUSH PULL, SPINDLE                           |                        | D6   |
| 1067          | FLUSH PULL, SPINDLE                           |                        | D6   |
| 1067-38       | FLUSH PULL, SPINDLE                           |                        | D6   |
| 1067-516      | FLUSH PULL, SPINDLE                           |                        | D6   |
| 1068          | FLUSH PULL, SPINDLE                           |                        | D6   |
| 1068-38       | FLUSH PULL, SPINDLE                           |                        | D6   |
| 1068-516      | FLUSH PULL, SPINDLE                           |                        | D6   |
| 1070-2        | PUSH PLATE                                    |                        | B3   |
| 1071-2        | PULL PLATE                                    | ADA                    | B3   |
| 1082-4        | CYLINDRICAL LOCK GUARD 4"                     |                        | G    |
| 1082-6        | CYLINDRICAL LOCK GUARD 6"                     |                        | G    |
| 1090          | ANTI VANDAL PULL                              | ADA, #354,670          | D4   |
| 1091          | ANTI VANDAL PULL, NO ASTRAGAL                 | ADA, #354,670          | D4   |
| 1092          | ANTI VANDAL PULL, NARROW STILE<br>NO ASTRAGAL | ADA, #354,670          | D4   |

# INDEX by TRIMCO NUMBER

| TRIMCO NUMBER | DESCRIPTION                      | DESIGNATION/<br>PATENT | PAGE |
|---------------|----------------------------------|------------------------|------|
| 1096TL        | TUF-LOK SYSTEM ANTI VANDAL       | ADA                    | D4   |
| 1096HA        | TUF-LOK HANDLE ONLY              | ADA                    | D4   |
| 1097HA        | TUF-LOK HANDLE ONLY, NO ASTRAGAL | ADA                    | D4   |
| 1097TL        | TUF-LOK, NO ASTRAGAL             | ADA                    | D4   |
| 1098RG        | ANTI VANDAL PULL                 | ADA                    | D4   |
| 1102S         | PULL                             | ADA                    | D7   |
| 1102T         | PULL                             | ADA                    | D7   |
| 1109-1        | PULL                             | ADA                    | D7   |
| 1111A         | FLUSH PULL, CUP MOUNT            | ADA                    | D7   |
| 1111B         | FLUSH PULL, FACE MOUNT           | ADA                    | D7   |
| 1111C         | FLUSH PULL, CUP MOUNT            | ADA                    | D7   |
|               | MEETS CA DISABILITY              |                        |      |
| 1113          | FLUSH PULL                       | ADA                    | D7   |
| 1115(B)       | FLUSH PULL                       |                        | D7   |
| 1117-1        | PULL                             | ADA                    | D8   |
| 1120          | PULL                             | ADA                    | D8   |
| 1134          | HOSPITAL PULL                    | ADA                    | D8   |
| 1134B         | HOSPITAL PULL, BTB               | ADA                    | D8   |
| 1135          | GRIP                             | ADA                    | D8   |
| 1136-1        | GRIP                             | ADA                    | D8   |
| 1139-1        | GRIP                             | ADA                    | D8   |
| 1139-2        | GRIP                             | ADA                    | D8   |
| 1147          | GRIP                             | ADA                    | D8   |
| 1147B         | GRIP, BTB                        |                        | D8   |
| 1150          | GRIP                             | ADA                    | D9   |
| 1151          | GRIP                             | ADA                    | D9   |
| 1183-1        | GRIP                             | ADA                    | D8   |
| 1191-1        | GRIP                             | ADA                    | D9   |
| 1191-2        | GRIP                             | ADA                    | D9   |
| 1191-3        | GRIP                             | ADA                    | D9   |
| 1191-4        | GRIP                             | ADA                    | D9   |
| 1191-4J       | GRIP                             | ADA                    | D9   |
| 1191-5        | GRIP                             | ADA                    | D9   |
| 1191-5J       | GRIP                             | ADA                    | D9   |
| 1193-1        | GRIP                             | ADA                    | D9   |
| 1193-2        | GRIP                             | ADA                    | D9   |
| 1194-1        | GRIP                             | ADA                    | D10  |
| 1194-2        | GRIP                             | ADA                    | D10  |
| 1194-3        | GRIP                             | ADA                    | D10  |
| 1194-4        | GRIP                             | ADA                    | D10  |
| 1195-1        | GRIP                             | ADA                    | D10  |
| 1195-2        | GRIP                             | ADA                    | D10  |
| 1195-3        | GRIP                             | ADA                    | D10  |
| 1195-3J       | GRIP                             | ADA                    | D10  |
| 1195-6        | GRIP                             | ADA                    | D10  |
| 1195-6J       | GRIP                             | ADA                    | D10  |
| 1199-1        | GRIP                             | ADA                    | D10  |
| 1199-2        | GRIP                             | ADA                    | D10  |
| 1200          | FLOOR STOP WS                    |                        | F1   |
| 1201          | FLOOR STOP                       |                        | F1   |
| 1201CK        | FLOOR STOP                       |                        | F1   |
| 1201-5        | FLOOR STOP                       |                        | F1   |
| 1204          | BASE STOP WS                     |                        | F1   |
| 1205          | BASE STOP                        |                        | F1   |
| 1206          | BASE STOP WS                     |                        | F1   |
| 1207          | STOP                             |                        | F1   |
| 1208          | STOP                             |                        | F1   |
| 1209          | HEAVY DUTY FLOOR STOP            |                        | F1   |
| 1209HO        | HEAVY DUTY FLOOR STOP, HOLD OPEN |                        | F1   |
| 1209HA        | HEAVY DUTY FLOOR STOP, SS SHAFT  |                        | F1   |
| 1209W         | HEAVY DUTY WALL STOP             |                        | F1   |
| W1211         | UNIVERSAL DOOR STOP              | #4.209.876             | F1   |



# INDEX by TRIMCO NUMBER

| TRIMCO NUMBER   | DESCRIPTION                                 | DESIGNATION/<br>PATENT | PAGE |
|-----------------|---|------------------------|------|
| W1211CL         | RISER                                       |                        | F2   |
| 1211            | UNIVERSAL DOME STOP                         |                        | F2   |
| W1211CH         | RISER                                       |                        | F2   |
| 1214            | STOP  |                        | F2   |
| 1214CK          | HEAVY DUTY STOP                             |                        | F2   |
| 1214CKx1268CK   | HEAVY DUTY STOP x ANCHOR PLATE              |                        | F8   |
| 1214H           | HEAVY DUTY STOP, 2-1/4" HIGH                |                        | F2   |
| 1215CKU         | UNIVERSAL STOP                              |                        | F2   |
| 1217P, S        | STOP  |                        | F3   |
| 1220-5          | KICKDOWN DOOR STOP                          |                        | F3   |
| 1221-4          | KICKDOWN DOOR STOP                          |                        | F3   |
| 1221-4FF        | KICKDOWN DOOR STOP                          |                        | F3   |
| 1223            | STOP WS                                     |                        | F3   |
| 1224            | STOP  |                        | F3   |
| 1224-5          | STOP  |                        | F3   |
| 1228            | PIPE ADAPTER FOR WALL STOP                  |                        | F4   |
| 1229A           | SILENCER, METAL FRAME                       |                        | F4   |
| 1229B           | SILENCER, WOOD FRAME                        |                        | F4   |
| 1229EL          | EVEVATOR BUMPER                             |                        | F4   |
| 1231            | STOP  |                        | F4   |
| 1233            | STOP  |                        | F4   |
| 1234            | STOP AND HOLDER                             |                        | F4   |
| 1235            | BASE STOP                                   |                        | F4   |
| 1244            | STOP, ROLLER                                |                        | F5   |
| 1244-6          | STOP, ROLLER                                |                        | F5   |
| 1245            | STOP, ROLLER                                |                        | F5   |
| 1254            | STOP AND HOLDER                             |                        | F5   |
| 1255            | PLUNGER DOOR HOLDER                         |                        | F5   |
| 1257M           | STOP  |                        | F5   |
| 1257R           | RISER                                       |                        | F5   |
| 1258M           | STOP  |                        | F5   |
| 1260P           | PIPE ADAPTER STRIKE                         |                        | F6   |
| 1260W           | STOP AND WALL STRIKE                        |                        | F6   |
| 1260WP          | STOP AND HOLDER WITH PIPE ADAPTER STRIKE    |                        | F6   |
| 1261            | STOP AND HOLDER                             |                        | F6   |
| 1263            | STOP AND HOLDER                             |                        | F6   |
| 1265            | STOP AND HOLDER                             |                        | F6   |
| 1267            | STOP AND HOLDER                             |                        | F6   |
| 1268            | ANCHOR PLATE                                |                        | F6   |
| 1268CK          | ANCHOR PLATE, DRILLED AND TAPPED FOR 1214CK |                        | F6   |
| 1270CX          | WALL BUMPER - CONVEX                        |                        | F7   |
| 1270CV          | WALL BUMPER - CONCAVE                       |                        | F7   |
| 1270WX          | WALL BUMPER - CONVEX                        |                        | F7   |
| 1270WV          | WALL BUMPER - CONCAVE                       |                        | F7   |
| 1270CVPV        | WALL BUMPER                                 |                        | F8   |
| 1270CVSV        | WALL BUMPER                                 |                        | F8   |
| 1271SA          | WALL BUMPER                                 |                        | F7   |
| 1271TB          | WALL BUMPER                                 |                        | F7   |
| 1271CP          | WALL BUMPER                                 |                        | F7   |
| 1275RP          | WALL BUMPER                                 |                        | F7   |
| 1277/79         | WALL BUMPER                                 |                        | F7   |
| 1278CXTB        | WALL BUMPER                                 |                        | F7   |
| 1278CXMS        | WALL BUMPER                                 |                        | F7   |
| 1278CXCP        | WALL BUMPER                                 |                        | F7   |
| 1278CVTB        | WALL BUMPER                                 |                        | F7   |
| 1278CVMS        | WALL BUMPER                                 |                        | F7   |
| 1278CVCP        | WALL BUMPER                                 |                        | F7   |
| L1280           | STOP AND HOLDER                             |                        | F8   |
| 1282            | STOP AND HOLDER                             |                        | F8   |
| 1282CI          | STOP AND HOLDER                             |                        | F8   |
| 1283-2S, 4S, 6S | "ADJUSTRE" DOOR STOP AND HOLDER             | #3,129,024             | F8   |

# INDEX by TRIMCO NUMBER

| TRIMCO NUMBER | DESCRIPTION                               | DESIGNATION/<br>PATENT               | PAGE |
|---------------|---|--------------------------------------|------|
| 1290          | STOP                                      |                                      | F9   |
| 1296          | STOP                                      |                                      | F9   |
| 1296S         | STOP                                      |                                      | F9   |
| 1298          | STOP                                      |                                      | F9   |
| 1301          | MASTERPIECE PULL                          | ADA                                  | B4   |
| 1310          | MASTERPIECE PULL                          | ADA                                  | B4   |
| 1310-1        | MASTERPIECE PULL                          | ADA                                  | B4   |
| 1320          | MASTERPIECE PULL                          | ADA                                  | B4   |
| 1330          | MASTERPIECE PULL                          | ADA                                  | B5   |
| 1340          | MASTERPIECE PULL                          | ADA                                  | B5   |
| 1340-10       | MASTERPIECE PULL                          | ADA                                  | B5   |
| 1350          | MASTERPIECE PULL                          | ADA                                  | B4   |
| 1360          | MASTERPIECE PULL                          | ADA                                  | B5   |
| 1370          | MASTERPIECE PULL                          | ADA                                  | B4   |
| 1380          | MASTERPIECE PULL                          | ADA                                  | B5   |
| 1390          | MASTERPIECE PULL                          | ADA                                  | B4   |
| 1410          | MASTERPIECE PULL                          | ADA                                  | B5   |
| 1410-1        | MASTERPIECE PULL                          | ADA                                  | B5   |
| 1502/3/5/7    | LATCHBOLTS                                | UL                                   | C3   |
| 1554          | ROLLER LATCH                              |                                      | C1   |
| 1555 (L)      | CLOSET BALL CATCH                         |                                      | C1   |
| 1559          | ROLLER LATCH                              |                                      | C2   |
| 1559A         | STRIKE FOR THE ROLLER LATCH               |                                      | C2   |
| 1559B         | STRIKE FOR THE ROLLER LATCH               |                                      | C2   |
| 1559C         | STRIKE FOR THE ROLLER LATCH               |                                      | C2   |
| 1559BL        | ROLLER LATCH WITH STOP                    |                                      | C2   |
| 1562(P)       | PUSH/PULL LATCH                           | ADA / UL<br>#s 4,003,593 / 4,986,583 | C3   |
| 1562E         | EXIT ONLY LATCH                           | ADA / UL<br>#s 4,003,593 / 4,986,583 | C3   |
| 1562M         | PUSH/PULL LATCH – MORTISE LOCK<br>LOCKING | ADA / UL<br>#s 4,003,593 / 4,986,583 | C3   |
| 1563(P)       | PUSH/PULL LATCH                           | ADA / UL<br>#s 4,003,593 / 4,986,583 | C3   |
| 1580(P)       | PUSH/PULL LATCH                           | ADA / UL<br>#s 4,003,593 / 4,986,583 | C3   |
| 1581(P)       | PUSH/PULL LATCH                           | ADA / UL<br>#s 4,003,593 / 4,986,583 | C3   |
| 1591(P)       | REVERSE PUSH/PULL LATCH                   | ADA                                  | C3   |
| 1592LLE       | LEAD LINED ESCUTCHEON                     |                                      | C3   |
| 1592LLT       | LEAD LINED LATCH TUBE                     |                                      | C3   |
| 1592RK        | REPLACEMENT KIT                           |                                      | C3   |
| 1630          | PUSH BAR                                  |                                      | E1   |
| 1630B         | PUSH BAR, BTB                             |                                      | E1   |
| 1633          | PUSH BAR                                  |                                      | E1   |
| 1633-1        | PUSH BAR                                  |                                      | E1   |
| 1637          | PUSH BAR                                  |                                      | E1   |
| J1637         | J-HOOK FOR THE 1637                       |                                      | E1   |
| 1642          | PUSH BAR SET                              |                                      | E2   |
| 1643          | PUSH BAR SET                              |                                      | E2   |
| 1644          | PUSH BAR SET                              |                                      | E2   |
| 1661          | PUSH BAR SET                              |                                      | E2   |
| 1662          | PUSH BAR SET                              |                                      | E2   |
| 1663          | PUSH BAR SET                              |                                      | E2   |
| 1671          | PUSH BAR SET                              |                                      | E2   |
| 1672          | PUSH BAR SET                              |                                      | E2   |
| 1673          | PUSH BAR SET                              |                                      | E2   |
| 1682          | PUSH BAR SET                              |                                      | E3   |
| 1683          | PUSH BAR SET                              |                                      | E3   |
| 1698          | PUSH BAR                                  |                                      | E3   |

# INDEX by TRIMCO NUMBER

| TRIMCO NUMBER  | DESCRIPTION                          | DESIGNATION/<br>PATENT     | PAGE |
|----------------|--------------------------------------|----------------------------|------|
| 1729           | PUSH/PULL BAR SET                    | ADA                        | E3   |
| 1731           | PUSH/PULL BAR SET                    | ADA                        | E3   |
| 1732           | PUSH/PULL BAR SET                    | ADA                        | E3   |
| 1737           | PUSH/PULL BAR SET                    | ADA                        | E4   |
| 1738           | PUSH/PULL BAR SET                    | ADA                        | E4   |
| 1740           | PUSH BAR                             | ADA                        | E4   |
| 1741           | PUSH BAR                             | ADA                        | E4   |
| 1745           | PUSH BAR                             | ADA                        | E4   |
| 1746           | PUSH/PULL BAR SET                    | ADA                        | E3   |
| 1746-1         | PUSH/PULL BAR SET                    | ADA                        | E3   |
| 1747           | PUSH/PULL BAR SET                    | ADA                        | E4   |
| 1747-1         | PUSH/PULL BAR SET                    | ADA                        | E4   |
| 1748           | DOOR PULL                            | ADA                        | D10  |
| 1748-1         | DOOR PULL                            | ADA                        | D10  |
| 1802-4         | PULL PLATE                           | ADA                        | D11  |
| 1804-4         | PULL PLATE                           | ADA                        | D11  |
| 1807-4         | PUSH PLATE                           |                            | D11  |
| 1809-4         | PUSH PLATE                           |                            | D11  |
| 1820           | PUSH/PULL PLATE                      |                            | D11  |
| 1820-11        | PUSH/PULL PLATE                      |                            | D11  |
| 1822           | CYLINDER PULL                        |                            | D11  |
| 1822-1         | CYLINDER PULL                        |                            | D11  |
| 1822-2         | CYLINDER PULL                        |                            | D11  |
| 1900           | CLASSIC PULL PLATE                   | ADA                        | B3   |
| 1901           | CLASSIC PUSH PLATE                   |                            | B3   |
| 2082           | MAIL PLATE SET                       |                            | G3   |
| 2085           | MAIL PLATE SET                       |                            | G3   |
| 2091           | MAIL SLOT SLEEVE                     |                            | G3   |
| 3070-1         | COAT AND HAT HOOK                    |                            | G4   |
| 3071           | COAT AND HAT HOOK                    |                            | G4   |
| 3090           | CARRY OPEN BAR                       |                            | C5   |
| 3092           | COORDINATOR                          | UL                         | C4   |
| 3093           | COORDINATOR                          | UL                         | C4   |
| 3094 (A-D)     | COORDINATOR                          | UL #5,033,234              | C4   |
| 3094-X (1-5)   | FILLER BAR                           |                            | C5   |
| 3095           | MOUNTING BRACKET                     | UL                         | C4   |
| 3096           | MOUNTING BRACKET                     | UL                         | C4   |
| 3401FF         | HANDRAIL BRACKET                     |                            | G5   |
| 3404           | HANDRAIL BRACKET                     |                            | G5   |
| 3405           | HANDRAIL BRACKET                     |                            | G5   |
| 3406           | HANDRAIL BRACKET                     |                            | G5   |
| 3408           | HANDRAIL BRACKET                     |                            | G5   |
| 3409           | HANDRAIL BRACKET                     |                            | G5   |
| 3651           | STRIKE 115.3                         |                            | C2   |
| 3652           | STRIKE 115.2                         |                            | C2   |
| 3810           | AUTOMATIC FLUSHBOLT, METAL DOOR      | UL #5,076,620              | C6   |
| 3815L          | AUTOMATIC FLUSHBOLT, WOOD DOOR       | UL #5,076,620              | C6   |
| 3820           | SEMI-AUTOMATIC FLUSHBOLT, METAL DOOR | UL #5,004,277              | C6   |
| 3825L          | SEMI-AUTOMATIC FLUSHBOLT, WOOD DOOR  | UL #5,004,277              | C6   |
| 3830 (A, M, W) | FINISH KIT - AFB, SEMI-AFB           |                            | C6   |
| 3850           | FIREBOLT, DOOR EDGE MOUNTED          | ADA                        | C8   |
| 3900           | DUBL-BOLT                            | ADA / UL<br>PATENT PENDING | C6   |
| 3910 (N)       | DUSTPROOF STRIKE                     |                            | C7   |
| 3911           | DUSTPROOF STRIKE                     |                            | C7   |
| 3913           | MANUAL FLUSHBOLT, WOOD DOOR          | UL                         | C7   |
| W3913          | MANUAL FLUSHBOLT, WOOD DOOR          | UL #4,315,647              | C7   |
| 3915           | MANUAL FLUSHBOLT, METAL DOOR         | UL                         | C7   |
| 3916           | MANUAL FLUSHBOLT, WOOD DOOR          |                            | C7   |
| 3917-1B        | 1-1/2" BOLTHEAD                      |                            | C7   |
| 3917-3B        | 3" BOLTHEAD                          |                            | C7   |

# INDEX by TRIMCO NUMBER

| TRIMCO NUMBER    | DESCRIPTION  | DESIGNATION/<br>PATENT | PAGE    |
|------------------|--|------------------------|---------|
| 3917-12          | MANUAL FLUSHBOLT, METAL DOOR                             | UL                     | C7      |
| 3917-12ET        | MANUAL FLUSHBOLT, METAL DOOR                             |                        |         |
| W3917-12         | MANUAL FLUSHBOLT, METAL DOOR                             | UL #4,315,647          | C7      |
| 3920 (-4, -8...) | DUTCH DOOR BOLT  |                        | C8      |
| 3921             | HEAVY DUTY SURFACE BOLT                                  |                        | C9      |
| 3922             | SURFACE BOLT   | UL                     | C8      |
| 3923             | SURFACE BOLT   | UL                     | C8      |
| 3928K, L         | CREMONE BOLT / KNOB, LEVER                               |                        | C9      |
| 3999             | FLUSHBOLT, WOOD, ROUNDED END                             |                        | C9      |
| 3999SE           | FLUSHBOLT, WOOD, SQUARE END                              |                        | C9      |
| 4015             | DOOR GUARD, CHAIN  |                        | G6      |
| 4016             | DOOR GUARD, SWING ARM                                    |                        | G6      |
| 4016ED           | EDGE PROTECTOR   |                        | G6      |
| 4016S            | NYLON SPACER, BLACK ONLY                                 |                        | G6      |
| 4048             | CHAIN CRASH STOP   |                        | G6      |
| 4873             | SURFACE BOLT   |                        | C9      |
| 4874             | SURFACE BOLT   |                        | C9      |
| 4876             | SURFACE BOLT   |                        | C9      |
| 4882             | SURFACE BOLT   |                        | C9      |
| 5000-T           | LOCK ASTRAGAL, CAST                                      |                        | G6      |
| 5001             | LOCK ASTRAGAL  |                        | G6      |
| 5002             | LOCK ASTRAGAL  |                        | G6      |
| 5004             | MORTISE LOCK INDICATOR                                   |                        | G1      |
| 5022             | UNIT LOCK TO CYLINDRICAL LOCK                            |                        | G6      |
| 7001             | fOCAL PUSH PLATE   |                        | fOCAL 2 |
| 7009             | fOCAL PUSH PLAT  |                        | fOCAL 2 |
| 7010             | fOCAL ROBE HOOK AND STOP                                 |                        | fOCAL 2 |
| 7059             | fOCAL FLUSH CUP  |                        | fOCAL 1 |
| 7060             | fOCAL FLUSH CUP, LARGE                                   |                        | fOCAL 1 |
| 7061             | fOCAL FLUSH CUP, SMALL                                   |                        | fOCAL 1 |
| 7140             | fOCAL 'D' PULL WITH PLATE<br>INTERIOR - 6"               | ADA                    | fOCAL 2 |
| 7140S            | fOCAL 'D' PULL WITH STYLE PLATES<br>INTERIOR - 6"        | ADA                    | fOCAL 2 |
| 7141             | fOCAL 'D' PULL WITH PLATE<br>INTERIOR - 8"               | ADA                    | fOCAL 2 |
| 7141S            | fOCAL 'D' PULL WITH STYLE PLATES<br>INTERIOR - 8"        | ADA                    | fOCAL 2 |
| 7150             | fOCAL CANE PULL - EXTERIOR                               | ADA                    | fOCAL 2 |
| 7160             | fOCAL OFFSET CANE PULL - EXTERIOR                        | ADA                    | fOCAL 1 |
| 7170             | fOCAL WING PULL<br>EXTERIOR - 10"                        | ADA                    | fOCAL 2 |
| 7180             | fOCAL WING PULL WITH PLATE<br>INTERIOR - 6"              | ADA                    | fOCAL 2 |
| 7180S            | fOCAL WING PULL WITH STYLE PLATES<br>INTERIOR - 6"       | ADA                    | fOCAL 2 |
| 7181             | fOCAL WING PULL WITH PLATE<br>INTERIOR - 8"              | ADA                    | fOCAL 2 |
| 7181S            | fOCAL WING PULL WITH STYLE PLATES<br>INTERIOR - 8"       | ADA                    | fOCAL 2 |
| 7191             | fOCAL 45° OFFSET PULL<br>EXTERIOR                        | ADA                    | fOCAL 2 |
| 7208             | fOCAL PENCIL STOP  |                        | fOCAL 2 |
| 7276             | fOCAL WALL STOP, CAST                                    |                        | fOCAL 2 |
| W7276            | fOCAL WALL STOP, WROUGHT                                 |                        | fOCAL 2 |
| 7280             | fOCAL FLOOR STOP, SMALL                                  |                        | fOCAL 1 |
| 7281             | fOCAL FLOOR STOP, LARGE                                  |                        | fOCAL 1 |
| 7285             | fOCAL FLOOR STOP AND HOLDER, LARGE<br>WITH BAIL AND HOOK |                        | fOCAL 1 |
| 7300-1           | CABINET KNOB   |                        | D1      |
| 7300-1-1/4       | CABINET KNOB   |                        | D1      |

# INDEX by TRIMCO NUMBER

| TRIMCO NUMBER | DESCRIPTION                                     | DESIGNATION/<br>PATENT | PAGE |
|---------------|---|------------------------|------|
| 7301-1        | CABINET KNOB                                    |                        | D1   |
| 7301-1-1/4    | CABINET KNOB                                    |                        | D1   |
| PG8000        | LATCH GUARD                                     | #350,473 / 5,381,627   | G7   |
| PG8002        | LATCH GUARD / KICK PLATE COMBINATION            | #350,473 / 5,381,627   | G7   |
| PG8002-1      | LATCH GUARD & KICK PLATE (2-PIECE)              | #350,473 / 5,381,627   | G7   |
| 9550          | PUSH/PULL SET                                   |                        | D12  |
| 9551          | PUSH/PULL SET                                   |                        | D12  |
| 9560          | OFFSET ENTRANCE PULL                            | <b>ADA</b>             | D12  |
| 9561          | OFFSET ENTRANCE PULL                            | <b>ADA</b>             | D12  |
| KA038         | ARMOR PLATE .038                                |                        | G8   |
| KM038         | MOP PLATE .038                                  |                        | G8   |
| K0038         | KICK PLATE .038                                 |                        | G8   |
| KA050-1       | ARMOR PLATE .050 17" - 24" HEIGHT               |                        | G8   |
| KA050-2       | ARMOR PLATE .050 24" - 36" HEIGHT               |                        | G8   |
| K0050.ILLUM   | KICK PLATE WITH ILLUMINATED EXIT                |                        | G8   |
| KM050         | MOP PLATE .050 6" HEIGHT TO LESS THAN 8" HEIGHT |                        | G8   |
| KM050-1       | MOP PLATE .050 LESS THAN 6" HEIGHT              |                        | G8   |
| K0050         | KICK PLATE .050                                 |                        | G8   |
| KS050         | STRETCHER PLATE .050                            |                        | G8   |
| K6000         | KICK PLATE, PLASTIC .125                        |                        | G8   |
| KE31-1        | EDGE GUARD                                      |                        | G9   |
| KE32-1        | EDGE GUARD                                      |                        | G9   |
| KE33-1        | EDGE GUARD                                      |                        | G9   |
| KE34-1        | EDGE GUARD                                      |                        | G9   |
| KE35-1        | EDGE GUARD                                      |                        | G9   |
| KE36-1        | EDGE GUARD                                      |                        | G9   |
| KE37-1        | EDGE GUARD                                      |                        | G9   |
| KE38-1        | EDGE GUARD                                      |                        | G9   |
| K39           | FINGER GUARD                                    |                        | G9   |
| WA-A          | SPECIAL PROTECTION PLATE                        |                        | G7   |
| WA-B          | SPECIAL PROTECTION PLATE                        |                        | G7   |
| WA-C          | SPECIAL PROTECTION PLATE                        |                        | G7   |
| WA-D          | SPECIAL PROTECTION PLATE                        |                        | G7   |
| WA-E          | SPECIAL PROTECTION PLATE                        |                        | G7   |
| ADON          | MASTERCRAFT ENTRY PULL                          |                        | B7   |
| APOLLO        | MASTERCRAFT ENTRY PULL                          |                        | B7   |
| ARES          | MASTERCRAFT ENTRY PULL                          |                        | B8   |
| ATLAS         | MASTERCRAFT ENTRY PULL                          |                        | B7   |
| CRONUS        | MASTERCRAFT ENTRY PULL                          |                        | B6   |
| DAPHNE        | MASTERCRAFT ENTRY PULL                          |                        | B6   |
| HELANE        | MASTERCRAFT ENTRY PULL                          |                        | B7   |
| HELIO         | MASTERCRAFT ENTRY PULL                          |                        | B8   |
| HERMES        | MASTERCRAFT ENTRY PULL                          |                        | B8   |
| HERO          | MASTERCRAFT ENTRY PULL                          |                        | B6   |
| ISIS          | MASTERCRAFT ENTRY PULL                          |                        | B7   |
| JUNO          | MASTERCRAFT ENTRY PULL                          |                        | B7   |
| LUNA          | MASTERCRAFT ENTRY PULL                          |                        | B6   |
| MEDEA         | MASTERCRAFT ENTRY PULL                          |                        | B6   |
| MIDAS         | MASTERCRAFT ENTRY PULL                          |                        | B7   |
| SATURN        | MASTERCRAFT ENTRY PULL                          |                        | B8   |
| SOLAR         | MASTERCRAFT ENTRY PULL                          |                        | B6   |
| VENUS         | MASTERCRAFT ENTRY PULL                          |                        | B7   |
| VESTA         | MASTERCRAFT ENTRY PULL                          |                        | B6   |
| ZEUS          | MASTERCRAFT ENTRY PULL                          |                        | B6   |

## AVAILABLE FINISHES

| U.S. GOVT. | BHMA | DESCRIPTION  |
|------------|------|--|
| US3        | 605  | Polished Brass, Clear Coated                                 |
| US3NL*     | 499* | Polished Brass, No Lacquer                                   |
| US4        | 606  | Satin Brass, Clear Coated                                    |
| US5*       | 609  | Satin Brass, Blackened, Satin Relieved, Clear Coated         |
| US7*       | 610* | Satin Brass, Blackened, Bright Relieved, Clear Coated        |
| US9*       | 611  | Polished Bronze, Clear Coated                                |
| US10       | 612  | Satin Bronze, Clear Coated                                   |
| US10B      | 613  | Dark Oxidized Satin Bronze, Oil Rubbed                       |
| US11*      | 616* | Satin Bronze, Blackened, Satin Relieved, Clear Coated        |
| US15       | 619  | Satin Nickel Plated, Clear Coated                            |
| US15A      | 620  | Satin Nickel Plated, Blackened, Satin Relieved, Clear Coated |
| US19*      | 622* | Satin Black Coated   |
| US26       | 625  | Bright Chrome Plated   |
| US26D      | 626  | Satin Chrome Plated  |
| US28       | 628  | Satin Aluminum, Clear Anodized                               |
| US32       | 629  | Polished Stainless Steel                                     |
| US32D      | 630  | Satin Stainless Steel  |
| --         | 313  | Satin Aluminum, Dark Bronze Anodized                         |
| --         | 315  | Satin Aluminum, Black Anodized                               |

Those finishes with asterisks (\*) are considered "Special" and are available on request. 313 and 335 finishes are available on limited products. Those products are marked with underlined prices in the price list.

Many other finishes can be furnished on special order.

Note: Finish 613 (US-10B) is unstable and will vary when applied to different alloys or forms of base metal and in the products of different manufactures. Limited shelf life.

Finish 622 (US19), flat black coated, is neither recommended or guaranteed.

## ABBREVIATIONS USED

|                        |                       |                        |                          |
|------------------------|-----------------------|------------------------|--------------------------|
| B - Base               | D - Diameter          | L - Length             | S - Spindle              |
| BHMA - BHMA product #  | DP - Depth            | M - Material           | STR - Strike             |
| BP - Base Projection   | E - Engraving         | OA - Overall Size      | SW - Stop Width          |
| BR - Brackets          | F - Finish            | OD - Outside Dimension | SYM - Symbol             |
| BS - Backset           | G - Grip Style        | P - Projection         | TH - Throw               |
| CL - Clearance         | GP - Grip Projection  | PP - Push Plate        | W - Width                |
| COL - Color            | H - Height            | R - Riser              | WC - Wall to Center Line |
| CTC - Center to Center | ID - Inside Dimension | RET - Return Width     |                          |

Combo Pack - Fasteners for both wood, plaster or concrete are included.

*Abbreviations are also defined at the bottom of each page*

Br - Brass, Bz - Bronze, Al - Aluminum, SS - Stainless Steel, Pl - Chrome Plated (plated casting)

*The small letters Br, Bz, Pl, SS, Al at the lower right of each product table identify the base metal options in which that product is available*

---

## NOTES

- *The hardware shown on these pages is made with no compromise in quality, design or durability. Only first quality extrusions, sheet stock and castings are used. Careful matching, polishing, assembly and finishing result in a final product which we present with pride.*
- Templates are available, upon request, for every product offered by TRIMCO. Templates are issued only for the project for which they are requested. TRIMCO reserves the right to make design changes without notice. Always request a current template prior to machining doors.
- Our complete in-plant capabilities enable us to produce countless items of a special nature. *Let us quote on any of your hardware needs not shown in this catalog.*
- A large number of exterior pull handles and push/pull bar sets may be adapted for fOCAL styling and are marked “fOCAL option available” in the catalog and price list. Hard black finished style plates of appropriate diameter are provided at all locations where grip or base meet door frame.
- All castings are available in brass, bronze or aluminum unless otherwise noted.
- The small letters at the lower right of each product table identify the base metal options in which that product is available. Br - Brass, Bz - Bronze, Al - Aluminum, SS - Stainless Steel, Pl - Chrome Plated

## WARRANTY DISCLAIMER; EXCLUSIVE REMEDY

We do not warrant the merchantability or our products, nor do we offer any other warranty of any kind, expressed or implied, and the customer any not extend any warranty on our behalf to anyone. Any such unauthorized extensions shall be the customer's responsibility. In no event shall we be liable to the customer in warranty, contract, strict liability or otherwise for any damages alleged to be caused by one or more of our products, beyond the cost to the customer of the subject product or products, refund of the purchase price being customer's sole and exclusive remedy against us upon proof of any alleged claim. Incidental and consequential damages, including labor costs relating to installation or removal, shall not be our liability, and customer shall not have remedy against us for such damages, the sole and exclusive remedy for a proven claim having been stated above.

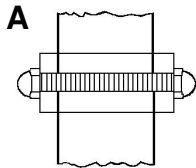
All materials and finishes meet ANSI/BHMA standards at time of shipment. We do not warrant finishes exposed to hostile environments.

Customer is responsible for determining the suitability of our products for customer's use or resale, or for incorporating them into objects, or for applications which customer designs, assembles, constructs or manufactures.

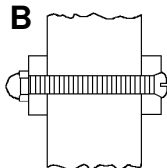
# STANDARD MOUNTING METHODS:

Add "W" to prep for Glass Mount. Specify Glass Thickness, Hole Diameter and Finish.  
Non-Standard Preps available by quotation only.

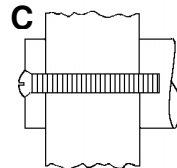
Products marked "Combo Pack" include fastening kit for mounting to wood, concrete and plaster/drywall.  
All fasteners for 1-3/4" wood or metal doors unless otherwise specified.



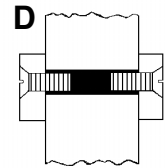
**A**  
Threaded Stud  
and Cap Nut



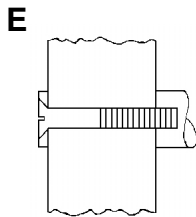
**B**  
Thru-Bolt  
and Cap Nut



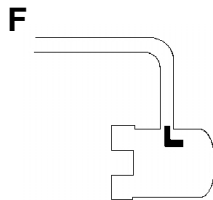
**C**  
Thru-Bolt  
and Cast Lug  
Not for glass mounting



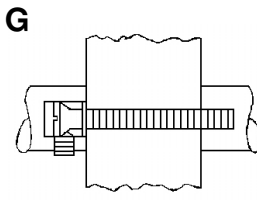
**D**  
Machine Screws and  
Threaded Sleeve



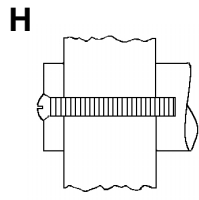
**E**  
Thru-Bolt and  
Finish Washer  
Not for glass mounting



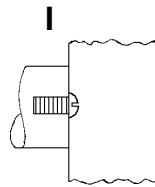
**F**  
J-20 Hook (For Push  
Bars only-one end)  
Not for glass mounting



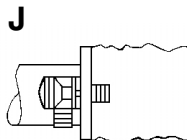
**G**  
Threaded Shoulder Bolt  
and Set Screw  
BP's req'd for glass doors.



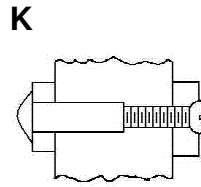
**H**  
Thru-bolt



**I**  
Blind Screw  
(Door detail required)  
Not for glass mounting.

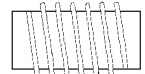


**J**  
Shoulder Bolt and Set  
Screw  
Round Bases  
Specify Riv-Nut "R3", "R4" or  
"B3", "B4" or "B5" if required, for  
use on aluminum doors.  
Not for glass mounting

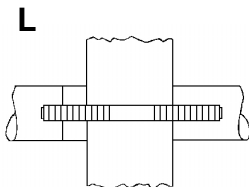


**K**  
Sex Bolt

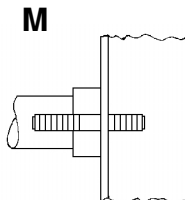
**B3, B4, or B5**



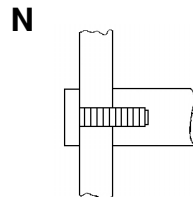
Wood Thread to Machine  
Thread Bushing  
For J or M Mountings  
on Wood Doors  
B3 - 1/4-20 Thread  
B4 - 5/16-18 Thread  
B5 - 3/8-16 Thread



**L**  
Spanner Turning Washer and  
Stud. Concealed Mounting for  
Round Bases.  
For Standard Metal, Wood, or Glass Doors.  
Specify. BP's req'd for glass doors.

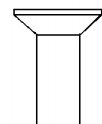


**M**  
Spanner Turning Washer,  
Stud Single Mounting for  
Round Bases  
Specify Riv-Nut "R3" or "R4" at right  
if required. Wood Doors. Specify.



**N**  
Flow Thru Button  
Single Mount for  
Round Bases  
For Standard Metal, Wood  
or Glass Doors. Specify.  
"R5" or "B5" only.

**R3, R4 or R5**



Riv-Nut  
R3 - 1/4-20 Thread  
R4 - 5/16-18 Thread  
R5 - 3/8-16 Thread



**Ron McCoy**

Princeton educated and award winning architect Ron McCoy of Los Angeles, working closely with Trimco engineers, has met the challenging demand for creative and affordable hardware.



With the fOCAL Series, McCoy blends fundamental forms, functions, and materials into inspired shapes and accents that will add distinction to any project.

Modern yet timeless, the McCoy conceptions refine each piece of hardware to the most elegant solution. Subtle visual appeal combines with strength and grace evident in a touch of the hand, making the fOCAL fixtures unique and exquisite.

**fOCAL**

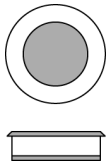
Quality of form. Quality of proportion. Quality of detail.

Trimco has designed all of these qualities into fOCAL, a full line of affordable architectural door hardware. Since good hardware is essential and cost control important, the fOCAL Series is manufactured to be the very best value in the industry.

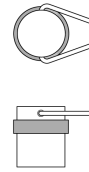
In a variety of fashionings and in all standard finishes. fOCAL solves the problem of having to choose between generic and extravagantly priced hardware.

*You now have an outstanding new range of choices, all made in the U.S.A.*

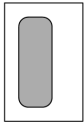
## fOCAL Products



**TRIMCO# 7059**  
 D 2-1/2"  
 fOCAL Flush Pull  
 Black interior standard  
 Standard prep 2-1/8" dia.  
 Fits BTB in a 1-3/8" door.



**TRIMCO# 7285**  
 D 1-3/4"  
 H 2-1/4"  
 fOCAL Stop with Bail & Hook



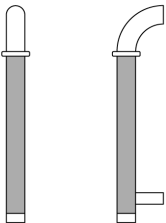
| TRIMCO# | 7060   | 7061    |
|---------|--------|---------|
| H       | 4-1/4" | 3-1/8"  |
| W       | 2-3/4" | 2-1/16" |

fOCAL Flush Pull  
 Black interior standard.

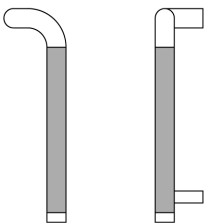


| TRIMCO# | 7280    | 7281   |
|---------|---------|--------|
| D       | 1-1/4"  | 1-3/4" |
| H       | 1-9/16" | 2-1/4" |

fOCAL Floor Stop  
 MS & Anchor Standard



**TRIMCO# 7150**  
 D 1"  
 CTC 10"  
 P 2-1/2"  
 OA 11-3/4"  
 fOCAL Cane Pull  
 Matte Black Poly Grip Standard  
 BTB available **ADA**

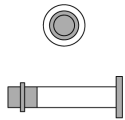


**TRIMCO# 7160**  
 D 1"  
 CTC 10"  
 P 2-1/2"  
 L 11-3/4"  
 OFF 2-3/4"  
 fOCAL Offset Cane Pull  
 Matte Black Poly Grip Standard  
 Specify hand  
 BTB available **ADA**



**fOCAL**

## fOCAL Products



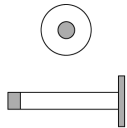
| TRIMCO# 7010 |             |
|--------------|-------------|
| D            | 5/8"        |
| L            | 3-3/8"      |
| PL           | 1-1/4" dia. |

**fOCAL Robe Hook & Stop**  
Hanger bolt standard



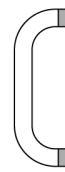
| TRIMCO# | 7180   | 7181   |
|---------|--------|--------|
| D       | 3/4"   | 3/4"   |
| CTC     | 6"     | 8"     |
| P       | 2-1/4" | 2-1/4" |

**fOCAL Interior Wing Pull**  
3 x 12" plain backplate standard  
thru-bolt mounting standard  
.S - 1" dia. Black style plate (no BP)  
thru-bolt mounting standard  
**ada**



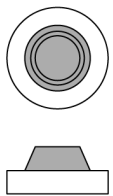
| TRIMCO# 7208 |             |
|--------------|-------------|
| D            | 1/2"        |
| L            | 3-1/2"      |
| PL           | 1-1/2" dia. |

**fOCAL Pencil Stop**  
Hanger bolt standard



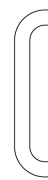
| TRIMCO# | 7140   | 7141   |
|---------|--------|--------|
| D       | 3/4"   | 3/4"   |
| CTC     | 6"     | 8"     |
| P       | 2-1/4" | 2-1/4" |

**fOCAL Interior D-Pull**  
3 x 12" backplate standard  
thru-bolt mounting standard  
.S - 1" dia. Black style plates (no BP)  
thru-bolt mounting standard



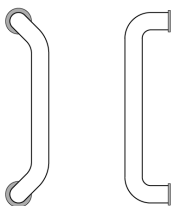
| TRIMCO# | 7276    | W7276   |
|---------|---------|---------|
| D       | 2-3/16" | 2-3/16" |
| H       | 1"      | 1"      |

**fOCAL Wall Bumper**  
Toggle standard  
Concave (V) shown  
Convex (X) available



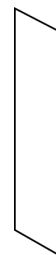
| TRIMCO# 7170 |        |
|--------------|--------|
| D            | 1"     |
| CTC          | 10"    |
| P            | 2-1/2" |

**fOCAL Entry Wing Pull**  
Black style plates standard  
**ADA**



| TRIMCO# 7191 |        |
|--------------|--------|
| D            | 1"     |
| CTC          | 10"    |
| P            | 2-1/2" |

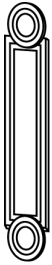
**fOCAL Offset Door Pull**  
Black style plate standard  
**ADA**



| TRIMCO# | 7001 | 7009 |
|---------|------|------|
| H       | 16"  | 16"  |
| W       | 4"   | 6"   |

**fOCAL Push Plate**  
No screw holes standard  
Adhesive mounting standard

# CLASSIC PUSHES, PULLS AND GRIPS



|                |                       |
|----------------|-----------------------|
| <b>TRIMCO#</b> | <b>15</b>             |
| OA             | 5/8 x 3-1/2 x 20-1/2" |
|                | Br, Bz, Pl            |

**Classic Push Plate – Cast**  
Solid Brass or Bronze gives rich, old-world feeling.  
Rough textured interior on decorative plate.



|                |                       |
|----------------|-----------------------|
| <b>TRIMCO#</b> | <b>16</b>             |
| OA             | 5/8 x 3-1/2 x 20-1/2" |
| G              | 1117-1                |
| P              | 2-1/4"                |
| CL             | 1-1/2"                |
| CTC            | 5"                    |
|                | Br, Bz, Pl            |

**Classic Pull Plate – Cast**  
Alternate grip style available. **ADA**  
Rough textured interior on decorative plate.



|                |                        |
|----------------|------------------------|
| <b>TRIMCO#</b> | <b>17</b>              |
| OA             | 7/16 x 3-5/8 x 20-1/2" |
|                | Br, Bz, Pl             |

**Classic Push Plate – Cast**  
Solid Brass or Bronze.  
Classic Church Gothic.  
Rough textured interior on decorative plate.



|                |                        |
|----------------|------------------------|
| <b>TRIMCO#</b> | <b>18</b>              |
| OA             | 7/16 x 3-5/8 x 20-1/2" |
| G              | 1183-1                 |
| P              | 2-1/2"                 |
| CL             | 1-1/2"                 |
| CTC            | 5"                     |
|                | Br, Bz, Pl             |

**Classic Pull Plate – Cast**  
Alternate grip styles available. **ADA**  
Rough textured interior on decorative plate.



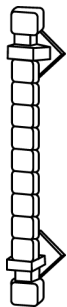
|                |                   |
|----------------|-------------------|
| <b>TRIMCO#</b> | <b>50</b>         |
| OA             | 3/8 x 3-3/4 x 15" |
|                | Br, Bz, Pl        |

**Classic Push Plate – Cast**  
Timeless Elegant Style.  
Rough textured interior on decorative plate.



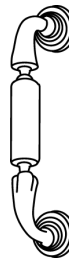
|                |                   |
|----------------|-------------------|
| <b>TRIMCO#</b> | <b>51</b>         |
| OA             | 3/8 x 3-3/4 x 15" |
| G              | 1117-1            |
| P              | 2-1/4"            |
| CL             | 1-1/2"            |
| CTC            | 5"                |
|                | Br, Bz, Pl        |

**Classic Pull Plate – Cast**  
Alternate grip styles available. **ADA**  
Rough textured interior on decorative plate.



|                |            |
|----------------|------------|
| <b>TRIMCO#</b> | <b>35</b>  |
| OA             | 17-3/8"    |
| B              | 2-3/4"     |
| P              | 4-1/2"     |
| CL             | 2-1/4"     |
| CTC            | 12-1/2"    |
|                | Br, Bz, Pl |

**Classic Door Pull – Cast**  
Very sturdy. **ADA**  
Dimpled finish on decorative plate.  
Rough textured interior on decorative plate.



|                |            |
|----------------|------------|
| <b>TRIMCO#</b> | <b>57</b>  |
| OA             | 9-3/4"     |
| B              | 1-3/4"     |
| P              | 2-5/8"     |
| CL             | 1-1/2"     |
| CTC            | 8"         |
|                | Br, Bz, Pl |

**Classic Grip – Cast**  
With 1-3/4" dia. Roses.  
Timeless Elegance. Can be mounted  
On a variety of plates. **ADA**

Standard Mountings – See page 3.

# CLASSIC PRODUCTS



| TRIMCO# | 58     | 59        |
|---------|--------|-----------|
| OA      | 9"     | 10-15/16" |
| B       | 15/16" | 15/16"    |
| P       | 2-1/2" | 2-1/2"    |
| CL      | 1-1/2" | 1-1/2"    |
| CTC     | 8"     | 10"       |

Br, Bz

### Classic Grip – Cast

Available w/roses, specify.  
Can be mounted to a variety of plates. **ADA**

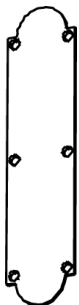


| TRIMCO# | 111     |
|---------|---------|
| OD      | 3-5/8"  |
| ID      | 2-3/16" |

Br, Bz, Pl

### Classic Escutcheon

Stamped ring.



| TRIMCO# | 1070-2      |
|---------|-------------|
| OA      | 3-1/2 x 15" |

Br, Bz

### Classic Push Plate .050 Solid Brass Plate

Tasteful, refined style.



| TRIMCO# | 1071-2      |
|---------|-------------|
| OA      | 3-1/2 x 15" |
| P       | 2-1/2"      |
| G       | #58         |
| CL      | 1-1/2"      |
| CTC     | 8"          |

Br, Bz

### Classic Pull Plate .050 Solid Brass Plate ADA

Standard Mountings – See page 3.

---

## CLASSIC PRODUCTS



| <b>TRIMCO# 1900</b> |                 |
|---------------------|-----------------|
| OA                  | 3-3/8 x 14-3/4" |
| G                   | 1136-1          |
| P                   | 2-1/4"          |
| CL                  | 1-1/2"          |
| CTC                 | 6-1/4"          |

Br, Bz, Pl

**Classic Pull Plate – 3/16" - thick**  
Solid brass or bronze. **ADA**



| <b>TRIMCO# 1901</b> |                 |
|---------------------|-----------------|
| OA                  | 3-3/8 x 14-3/4" |

Br, Bz, Pl

**Classic Push Plate – 3/16" thick**  
Solid brass or bronze, gives solid,  
High achiever feeling.

**Standard Mountings - See page 3.**

# M O D E R N



For over 40 years, TRIMCO / BBW have been designing and manufacturing exquisite, handcrafted doorpulls. Available in solid brass, bronze or aluminum and in an array of flawless finishes, this distinctive line of superior doorpulls is meticulously engineered and fabricated to provide years of long life and lasting beauty.

 **Trimco**

 **Builders  
Brass Works**

Custom entry pulls for Getty Center made by TRIMCO/BBW.



CALL US AT 213/262-4191 OR FAX TOLL FREE 800/637-8746

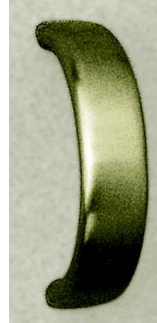
*TRIMCO/BBW offers the broadest range of sturdy and tasteful accessory door products.  
For additional information see us in the SweetSource CD and at the SWEETS web site: [www.sweets.com](http://www.sweets.com)*

# masterpieces

## Modern Masterpieces



|                         |             |
|-------------------------|-------------|
| <b>TRIMCO#</b>          | <b>1301</b> |
| <b>Door Pull – Cast</b> |             |
| OA                      | 10-1/2"     |
| CTC                     | 9"          |



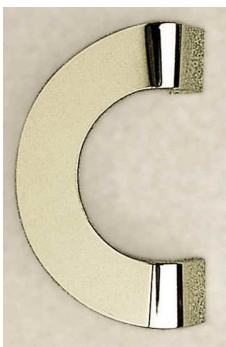
|                         |             |
|-------------------------|-------------|
| <b>TRIMCO#</b>          | <b>1370</b> |
| <b>Door Pull – Cast</b> |             |
| D                       | 9"          |
| P                       | 4-1/2"      |
| W                       | 2"          |
| CTC                     | 8"          |



|                         |             |               |
|-------------------------|-------------|---------------|
| <b>TRIMCO#</b>          | <b>1310</b> | <b>1310-1</b> |
| <b>Door Pull – Cast</b> |             |               |
| CTC                     | 12"         | 8"            |
| OFF                     | 7"          | 4-3/4"        |
| P                       | 2-1/2"      | 2-1/2"        |
| D                       | 15"         | 9-3/4"        |



|                         |                      |
|-------------------------|----------------------|
| <b>TRIMCO#</b>          | <b>1350L / 1358R</b> |
| <b>Door Pull – Cast</b> |                      |
| H                       | 12"                  |
| W                       | 2-1/2"               |
| P                       | 5-1/4"               |
| CTC                     | 9"                   |



|                         |             |
|-------------------------|-------------|
| <b>TRIMCO#</b>          | <b>1320</b> |
| <b>Door Pull – Cast</b> |             |
| OA                      | 9"          |
| OFF                     | 5-1/2"      |
| P                       | 1-1/2"      |
| CTC                     | 7"          |



|                         |             |
|-------------------------|-------------|
| <b>TRIMCO#</b>          | <b>1390</b> |
| <b>Door Pull – Cast</b> |             |
| H                       | 8-1/4"      |
| OFF                     | 5"          |
| P                       | 2-1/2"      |
| CTC                     | 6"          |



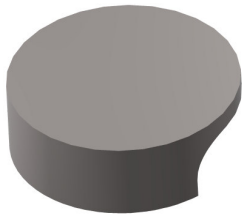
## Modern Masterpieces



| <b>TRIMCO# 1330</b>     |          |
|-------------------------|----------|
| <b>Door Pull – Cast</b> |          |
| H                       | 13-1/2"  |
| P                       | 2-11/16" |
| OFF                     | 7-5/8"   |
| CTC                     | 11"      |



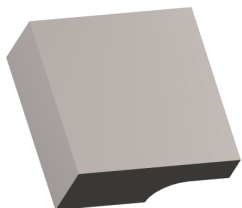
| <b>TRIMCO# 1340 1340-10</b> |         |         |
|-----------------------------|---------|---------|
| <b>Door Pull – Cast</b>     |         |         |
| L                           | 23-1/4" | 12-1/4" |
| P                           | 2-1/2"  | 2-1/2"  |
| OFF                         | 5-1/4"  | 5-1/4"  |
| CTC                         | 21      | 10"     |



| <b>TRIMCO# 1360</b>     |        |
|-------------------------|--------|
| <b>Door Pull – Cast</b> |        |
| D                       | 6"     |
| OFF                     | 3"     |
| P                       | 2"     |
| CTC                     | 4-3/4" |



| <b>TRIMCO# 1342</b>     |         |
|-------------------------|---------|
| <b>Door Pull – Cast</b> |         |
| L                       | 18"     |
| W                       | 1-1/2"  |
| P                       | 2-3/8"  |
| CTC                     | 17-1/4" |



| <b>TRIMCO# 1380</b>     |            |
|-------------------------|------------|
| <b>Door Pull – Cast</b> |            |
| OA                      | 5"         |
| P                       | 2"         |
| CTC                     | 4 x 2-3/4" |



| <b>TRIMCO# 1410 1410-1</b> |         |        |
|----------------------------|---------|--------|
| <b>Door Pull – Cast</b>    |         |        |
| L                          | 23-3/4" | 18"    |
| W                          | 2"      | 2"     |
| P                          | 2-1/2"  | 2-1/2" |
| CTC                        | 22-3/4" | 17"    |



**m** a s t e r c r a f t  
e n t r y d o o r h a r d w a r e

*A series of strong elegant pulls that offer a unique opportunity to show entry doors as tasteful works of art. These hand-finished pulls provide a stunning first impression for any building. Cast in our own foundry in all standard architectural finishes.*

*by*

 **Trimco**

P.O. BOX 23277 | LOS ANGELES, CA | 90023-0277 | USA  
TEL. 323/262-4191 | FAX. 323/264-7214 OR 800/637-TRIM

The designs shown here are reproduced from masters and handcrafted from artists to complete the total effect of the door both visually and functionally.

No compromise in quality, design or durability is made during the casting process. Careful machining, polishing, assembly and finishing results in a product which we present with pride.

MasterCraft entry door hardware – A series of strong, elegant pulls that offer a unique opportunity to show entry doors as tasteful works of art. These hand-finished pulls provide a stunning first impression for any building. Cast in our own foundry in all standard architectural finishes.



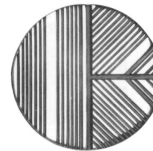
**TRIMCO# SOLAR\***  
OA 4-1/2" x 9-1/4"



**TRIMCO# DAPHNE**  
OA 2-1/2" x 8"



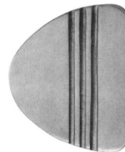
**TRIMCO# ZEUS\***  
OA 7" X 7"



**TRIMCO# HERO\***  
OA 8-1/2" diameter



**TRIMCO# MEDEA\***  
OA 6" x 7-3/4"



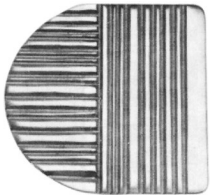
**TRIMCO# LUNA\***  
OA 6-1/4" x 7-3/4"



**TRIMCO# CRONUS**  
OA 5-3/4" x 5-3/4"



**TRIMCO# VESTA**  
OA 3-1/4" x 10-1/4"



**TRIMCO# APOLLO\***  
 OA 7" x 7"



**TRIMCO# JUNO**  
 OA 1-3/4" x 16"



**TRIMCO# HELANE**  
 OA 7" X 7"



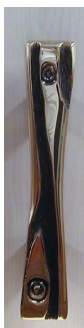
**TRIMCO# ATLAS**  
 OA 8-1/2" diameter



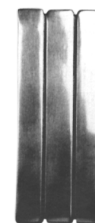
**TRIMCO# VENUS**  
 OA 2-1/4" x 15"



**TRIMCO# ADON**  
 OA 3" x 7"



**TRIMCO# ISIS**  
 OA 2-1/4" x 13-3/4"



**TRIMCO# MIDAS**  
 OA 4" x 10-1/4"



**TRIMCO# ARES**  
OA 5" x 9-1/4"

All MasterCraft pulls are **ADA** compliant.

\* indicates push/pull configuration available  
with special mounting hardware



**TRIMCO# HERMES**  
OA 4-1/4" x 8-1/2"

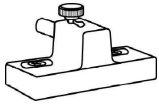


**TRIMCO# SATURN**  
OA 4-1/2" x 8-1/2"



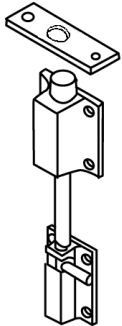
**TRIMCO# HELIO**  
OA 4-1/2" x 10-1/2"

# Bolts and Latches



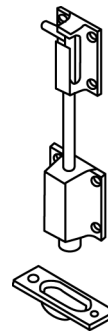
| TRIMCO# | ML2             | ML4             |    |
|---------|-----------------|-----------------|----|
| OA      | 1-3/8" x 2-1/4" | 1-3/8" x 2-1/4" |    |
| TH      | 5/8"            | 5/8"            |    |
|         | Thumb-turn      | Unlock with Key | AI |

**Mitey Lock** - Sliding Glass Door Lock  
Available in 628 finish only; minimum lots.  
ML2 shown



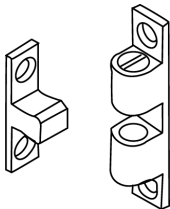
| TRIMCO# | 243T         |
|---------|--------------|
| OA      | 3/8" x 15"   |
| M       | Brass/Bronze |
| TH      | 1-1/2"       |
|         | Br, Bz, PI   |

Decorative Bolts for pairs of doors.  
Top door bolt with surface and mortise strikes included.



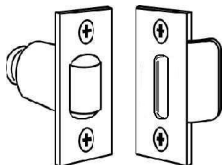
| TRIMCO# | 244B         |
|---------|--------------|
| OA      | 3/8" x 30"   |
| M       | Brass/Bronze |
| TH      | 1-1/2"       |
|         | Br, Bz, PI   |

**Cane Bolt Bottom - Cast**  
Decorative Bolts for pairs of doors.  
Bottom door bolt with cup strike included.



| TRIMCO# | 801              | 802             | 803             | 804              |
|---------|------------------|-----------------|-----------------|------------------|
| OA      | 5/16" x 1-11/16" | 3/8" x 1-15/16" | 7/16" x 2-5/16" | 1/2" x 2-3/4"    |
| M       | Brass            | Brass           | Brass           | Brass            |
| STR     | 9/32" x 1"       | 5/16" x 1-1/8"  | 3/8" x 1-7/16"  | 13-32" x 1-9/16" |
| BHMA    | B03291           | B03291          | B03291          | B03291           |

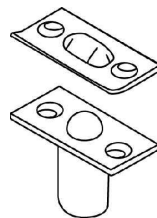
**3-Way Cabinet Catch**  
Machine Finish



| TRIMCO# | 1554            |
|---------|-----------------|
| OA      | 1-1/8" X 2-1/4" |
| DP      | 2-1/4"          |
| BHMA    | E09101          |
|         | Br, Bz, PI      |

### Roller Latch - 161 prep

Fits residential latch bolt prep.  
Adjustable Nylon Roller  
3 Types of Strikes available  
"B" Strike Shown

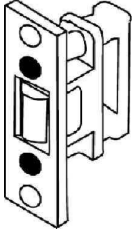


| TRIMCO# | 1555                             | 1555I      |
|---------|----------------------------------|------------|
| OA      | 1" x 2-1/8" 1" x 2-1/8"          |            |
| DP      | 1-3/16" 1" x 3/16"               |            |
| STR     | 1-1/16" x 2-1/8" 1-3/8" x 2-1/8" |            |
|         |                                  | Br, Bz, PI |

### Closet Ball Catch

Light Duty ball latch  
Adjustable roller force  
1555 is shown

# LATCHES AND STRIKES



**TRIMCO# 1559**  
OA 1/8" x 1" x 3-3/8"  
DP 1-13/16"  
BHMA E09091  
 Br, Bz, PL

**Heavy Duty Roller Latch**  
 Indicate strike choice – A, B or C  
 Adjustable Nylon Roller



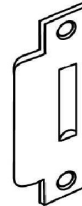
**TRIMCO# 1559A**  
OA 3/16" x 1-3/4" x 2-1/4"  
 Br, Bz, PI

**Strike only for Heavy duty Roller Latch 1559 (1559WA) Cast**  
 2-1/4" Full Lip.



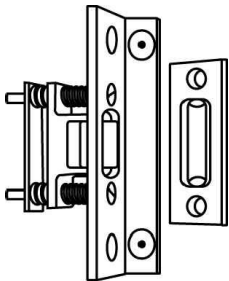
**TRIMCO# 1559B**  
OA 3/32" x 2" x 2-3/4"  
 Br, Bz, PI

**Strike only for Heavy duty Roller Latch 1559 (1559WB)**



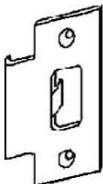
**TRIMCO# 1559C**  
OA 3/32" x 2" x 4-7/8"  
 Br, Bz, PI

**Strike only for Heavy duty Roller Latch 1559 (1559WC)**



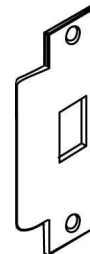
**TRIMCO# 1559BL**  
OA 1/8" x 1-1/2" x 4-1/2"  
DP 2-1/2"  
BHMA E09111  
 Br, Bz, PI

**Roller Latch with Angle Stop And Modified "A" Strike**  
 1559 Roller Latch with angle stop face plate.  
 Adjustable Nylon Roller.  
 For stopless frames.



**TRIMCO# 3651**  
OA 3/32" x 2" x 2-3/4"  
BHMA 115.3  
 Br, Bz, PI

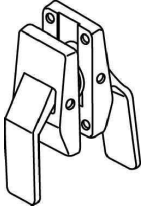
**Strike - 2-3/4"**  
 Adjustable tang.



**TRIMCO# 3652**  
OA 3/32" x 2" x 4-7/8"  
BHMA 115.2  
 Br, Bz, PI

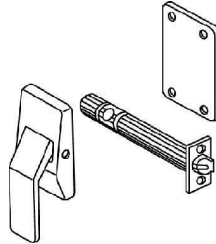
**Strike - ASA**  
 Adjustable tang.

# DEPENDABLE PUSH/PULL LATCHES



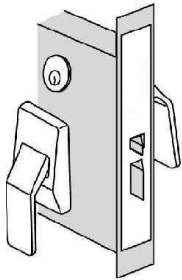
**TRIMCO# 1562**  
 BS 5" (1505)  
 STR 2-3/4" (3651)  
 Br, Bz, Pl, SS

**Push/Pull Latch**  
**Levers Down ADA/UL Listed**



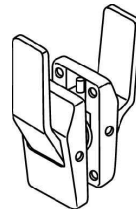
**TRIMCO# 1562E**  
 BS 5" (1505)  
 STR 2-3/4" (3651)  
 Br, Bz, Pl

**Exit Only Latch**  
**Lever Down ADA/UL**  
 Exit / Entrance Only -  
 Used when only one side of opening is designed for entrance or exit.  
 Ideal for secured areas.  
 Must Specify Handing



**TRIMCO# 1562Q**  
 BS 2-3/4"  
 STR 4-7/8"  
 Br, Bz, Pl, SS

**Push/Pull Mortise Lock**  
**Levers Down ADA/UL Listed**  
 Customer to supply cylinder.



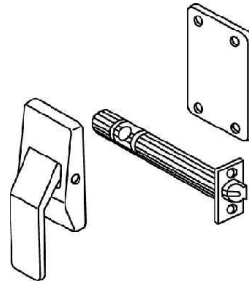
**TRIMCO# 1563**  
 BS 5" (1505)  
 STR 2-3/4" (3651)  
 Br, Bz, Pl

**Push/Pull Latch**  
**Levers Up ADA/UL**  
 Must Specify Handing

Note: PDQ mortise chassis supplied as standard. Alternate chassis are available at an additional cost & lead-time.

**1562Q55 Classroom Function**  
 (Standard)  
 Deadbolt by thumbturn lever inside or by emergency release tool outside.

**1562Q30 Privacy/bathroom**  
 Auxiliary latch deadlocks latchbolt  
**1562Q65 Dormitory/entrance**  
 Deadbolt by key outside or by thumbturn lever inside.

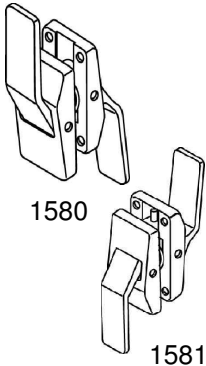


**TRIMCO# 1591**  
 BS 5" (1505)  
 STR 2-3/4" (3651)  
 Br, Bz, Pl

**Reverse Push or Pull Latch**  
 Requires monitoring personnel maintain pressure on lever paddle to prevent subject from exiting room. Made to order, may not be returnable. ADA  
 Must Specify Handing

\* Either 2-3/4", 3-3/4" or 5" Backset and 2-3/4" strike (3651) are supplied standard with Push/Pull latches. 7" Backset and/or ASA 4-7/8" (3652) Strike must be specified by buyer at extra cost.

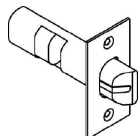
Patent #4003593 & 4986583



**TRIMCO# 1580**  
 BS 5" (1505)  
 STR 2-3/4" (3651)  
 Br, Bz, Pl, SS

**Push/Pull Latch,**  
**Push Up, Pull Down**  
**ADA/UL**

Specify 1581 for Push Down, Pull Up  
 Must Specify Handing



| TRIMCO# | 1502   | 1503   | 1505 | 1507 |
|---------|--------|--------|------|------|
| BS      | 2-3/4" | 3-3/4" | 5"   | 7"   |

Br, Bz, Pl

## Latchbolts for 1500 series

Push/Pull latch only

NOTE: Add suffix "P" to part number to have levers engraved "Push" and "Pull".


**1592LLE** (Lead Lined Escutcheon Plate) and **1592LLT** (Lead Lined Latch Tube) may be specified by buyer at extra cost. Specify **1592RK** Replacement Kit to replace latches on doors originally prepped for Roller Latch with Push/Pull Latch

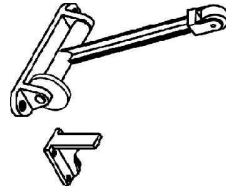


# Quiet Coordinators




|                |                     |
|----------------|---------------------|
| <b>TRIMCO#</b> | <b>3092</b>         |
| OA             | 1-5/8" X 5/8" X 18" |
| BHMA           | 4.1.1 Type 25       |
|                | 600 Black           |

**Retracting Door Coordinator**  
 For use on pairs of doors with or without astragal.  
 Not for use on unequal pairs of doors or with exposed vertical rods.   
 See Coordinator brochure for more information.  
 For openings 72" to 96"

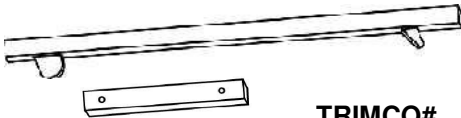


|                 |                   |
|-----------------|-------------------|
| <b>Trimco #</b> | <b>3093</b>       |
| OA              | 2-5/16" x 6-9/16" |
| BHMA            | 4.1.1 Type 25     |
|                 | Br, Bz, Pl        |


**Coordinator - Cast**  
 Drop Arm Type. Two nylon rollers and set screw adjustment standard. 

| <b>TRIMCO#</b> | <b>3094A2</b> | <b>3094B1</b> | <b>3094B2</b> | <b>3094B3</b> |
|----------------|---------------|---------------|---------------|---------------|
| W (of opening) | 43" - 53"     | 53" - 63"     | 63" - 75"     | 75" - 87"     |
| BHMA           | 4.1.1 Type 21 | 4.1.1 Type 21 | 4.1.1 Type 21 | 4.1.1 Type 21 |
|                |               |               |               | 600 Black     |

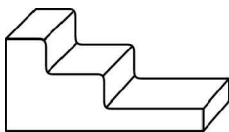
**Stop Mounted Coordinator w/Filler Bar** -   
 Patent #5033234




| <b>TRIMCO#</b> | <b>3094B4</b> | <b>3094C4</b> | <b>3094D</b>        |
|----------------|---------------|---------------|---------------------|
| W (of opening) | 87" - 95"     | 95" - 107"    | Special Application |
| BHMA           | 4.1.1 Type 21 | 4.1.1 Type 21 | 4.1.1 Type 21       |
|                |               |               | 600 Black           |

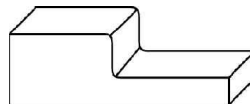
**Stop Mounted Coordinator w/Filler Bar** -   
 Patent #5033234

**3094** Easily configured for unequal pairs of doors. When ordering coordinators, specify opening width, leaf sizes, and finish of companion hardware.  
 Panic Strike preps available.  
 See Coordinator brochure for more information.




|                |               |
|----------------|---------------|
| <b>TRIMCO#</b> | <b>3095</b>   |
| OA             | 3-1/4" x 5"   |
| SW             | 7/8" - 2-1/4" |
| M              | Steel         |
|                | 600 Black     |

**Mounting Bracket**  
 For mounting stop-applied hardware. In conjunction with the 3094. 

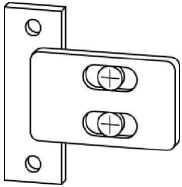


|                |             |
|----------------|-------------|
| <b>TRIMCO#</b> | <b>3096</b> |
| OA             | 3" x 5"     |
| S              | over 2-1/4" |
| M              | Steel       |
|                | 600 Black   |

**Mounting Bracket**  
 For mounting stop-applied hardware. In conjunction with the 3094. 

---

## Coordinator Accessories



**TRIMCO# 3090**  
 OA 1-1/2" x 2-7/8"  
 Br, Bz, Pl  
**Carry Open Bar Assembly**  
 For 3090 Series Coordinators  
 Maximum adjustment 1/2"

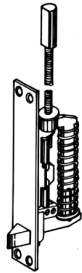


| <b>TRIMCO#</b> | <b>3094-1</b> | <b>3094-2</b> | <b>3094-3</b> | <b>3094-4</b> | <b>3094-5</b> |
|----------------|---------------|---------------|---------------|---------------|---------------|
| OA             | 12"           | 24"           | 36"           | 48"           | 60"           |


600 Black

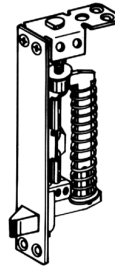
**Filler Bar Only**  
 For the 3094 Coordinator

# QUIET, LOW CLOSER FORCE AUTO FLUSHBOLTS, DUBL-BOLT




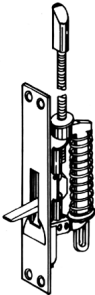
**TRIMCO# 3810**  
 BHMA 4.4 Type 25  
 Br, Bz, Pl, SS

**Automatic Flushbolt**  
 Metal Door - To be used in pairs on the inactive leaf of metal doors.  
 Rated 3 Hours  
 Patent #5076620  
 Can be used with the 3820 or 3850 Firebolt.




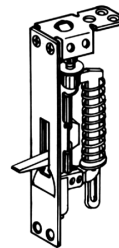
**TRIMCO# 3815**  
 BHMA 4.4 Type 25  
 Br, Bz, Pl, SS

**Automatic Flushbolt**  
 Wood Doors - To be used in pairs on the inactive leaf of wood doors.  
 Rated 1-1/2 Hours  
 Patent #5076620  
 Can be used with the 3825 or 3850 Firebolt.




**TRIMCO# 3820**  
 BHMA 4.4 Type 25  
 Br, Bz, Pl, SS

**Semi-Automatic Flushbolt**  
 Metal Doors - For use at top of the inactive leaf of metal doors. Used with the 3810.  
 Rated 3 Hours  
 Patent #5004277  
 Can be used with the 3850 Firebolt.

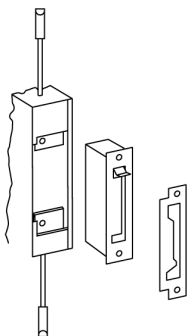


**TRIMCO# 3825**  
 BHMA 4.4 Type 25


Br, Bz, Pl, SS  
**Semi-Automatic Flushbolt**  
 Wood Doors - For use at top of the inactive leaf of wood doors. Use with the 3815  
 Rated 1-1/2 Hours  
 Patent #5004277  
 Can be used with the 3850 Firebolt.

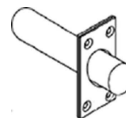
NOTE: Designed for use in pairs (top & bottom) with TRIMCO Door Coordinators. All Automatic and Semi-Automatic Flushbolts are supplied with Trimkits. Specify Finish. See Automatic Flushbolt brochure for more information. All of the above can be used with the 3850 Firebolt.

| TRIMCO#           | 3830A               | 3830M                                  | 3830W                                 |
|-------------------|---------------------|--|---------------------------------------|
| <b>Finish Kit</b> | <b>Finish Kit</b>   | <b>Finish Kit</b>                      | <b>Finish Kit</b>                     |
|                   | Automatic Flushbolt | Semi-Automatic Flushbolt<br>Metal Door | Semi-Automatic Flushbolt<br>Wood Door |
|                   |                     |  | Br, Bz, Pl, SS                        |




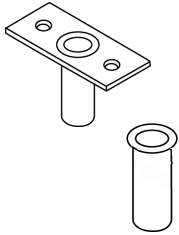
**TRIMCO# 3900**  
 Br, Bz, Pl, SS

**Dubl-Bolt**  
 Two Point Flushbolt for Inactive Door of a pair of Hollow Metal Doors.  
**ADA / **  
 Patent Pending.  
 Single motion 2-point flushbolt Mounted mid-door in standard Mortise prep. Handicap operable. See brochure.



**TRIMCO# 3850**  
 Br, Bz, Pl, SS

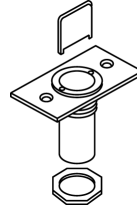
**Firebolt**  
 For use with the 3810, 3815, 3820 and 3825 to replace the bottom bolt. Can also be used in conjunction with vertical rod panic devices.  
 Patent Pending



| TRIMCO# 3910 |                          |
|--------------|--------------------------|
| OA           | 3/32" x 1-5/16" x 2-1/2" |
| DP           | 1-1/2"                   |
| BHMA         | L04021                   |

Br, Bz, Pl, SS

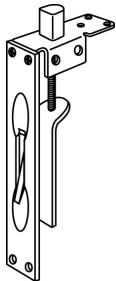
**Dust Proof Strike**  
To omit faceplate add suffix "N".  
Available in stainless steel.



| TRIMCO# 3911 |                          |
|--------------|--------------------------|
| OA           | 3/32" x 1-5/16" x 2-1/2" |
| DP           | 1-1/2"                   |
| BHMA         | L04021                   |

Br, Bz, Pl, SS

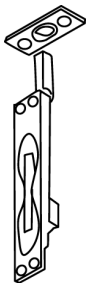
**Adjustable Dust Proof Strike**  
For carpet or threshold.  
Available in stainless steel.



| TRIMCO# | 3913                 | W3913                |
|---------|----------------------|----------------------|
| OA      | 1" x 6-3/4" x 2-1/2" | 1" x 6-3/4" x 2-1/2" |
| TH      | 3/4"                 | 3/4"                 |
| M       | Extruded             | Wrought              |

Br, Bz, Pl

**Flush Extension Bolt - Wood Door**  
Includes metal dust cover. Mounts at top corner of wood door.



| TRIMCO# 3915 |                 |
|--------------|-----------------|
| OA           | 1-1/4" X 6-3/4" |
| TH           | 11/16"          |
| ROD          | 6" - 30"        |
| BHMA         | L04081          |

Br, Bz, Pl

**Flush Extension Bolt**  
Metal Door

| TRIMCO# 3916 |              |
|--------------|--------------|
| OA           | 1" X 15-1/2" |
| TH           | 5/8"         |
| BHMA         | L04081       |

Br, Bz, Pl

**Flush Extension Bolt**  
One piece flushbolt for non-labeled, tall wood doors. Other lengths available.

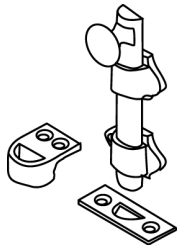


| TRIMCO# | 3917          | W3917         | 3917ET      |
|---------|---------------|---------------|-------------|
| OA      | 1" x 6-3/4"   | 1" x 6-3/4"   | 1" x 6-3/4" |
| TH      | 11/16"        | 11/16"        | 1-3/16"     |
| ROD     | 12"           | 12"           | 12"         |
| M       | Extruded      | Wrought       | Extruded    |
| BHMA    | L04081/L04251 | L04081/L04251 | L04081      |

Br, Bz, Pl

**Flush Extension Bolt - Metal Door - 1-1/2" Bolthead (3917-1B) standard; 3" Bolthead (3917-3B) also available.** Longer Rod Lengths available on request.

# BOLTS



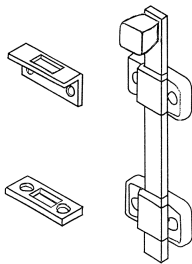
| TRIMCO# | 3920-4    | 3920-8  |
|---------|-----------|---------|
| OA      | 4-1/4"    | 8"      |
| TH      | 1/2" - 1" | 1" - 2" |

Br, Bz, Pl

### Dutch Door Bolt – Cast

Cast Strike for application without shelf and Flat Mortise Strike supplied.  
Other lengths available

Universal Strike supplied.  
Please specify angle or mortise strike.

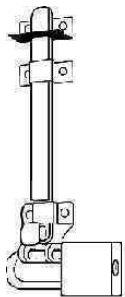


| TRIMCO# | 3922              | 3923              |
|---------|-------------------|-------------------|
| OA      | 2" x 8"           | 2" x 12"          |
| TH      | 1-1/8"            | 1-1/8"            |
| P       | 1-5/16"           | 1-5/16"           |
| M       | Steel 3/4" x 1/4" | Steel 3/4" x 1/4" |
| BHMA    | L04161            | L04161            |

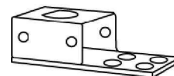
Br, Bz, Pl, SS

### Heavy Duty Surface Bolt - Available in stainless steel.

Furnished with Surface and Mortise Strikes. Custom Lengths Available. 



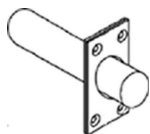
**TRIMCO# 3922L**  
**Locking Heavy Duty Surface Bolt**  
See 3922L Brochure



**TRIMCO# 3800-21**  
OA 1/2" x 1" x 2"  
M Steel

### Double Guide, Flushbolt

Extended guide for hollow metal doors with "U" channel top or bottom.

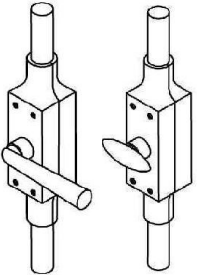


**TRIMCO# 3850**  
P 1"  
DOOR 1-3/4" x 5/64" x 1" dia.  
STR 1" dia. X 1-3/4" deep  
TEMP 450° F to activate bolt  
FORCE 8.5lbs

### Edge Mounted Fire Bolt

All Standard Finishes Available. 

# GUIDES AND BOLTS

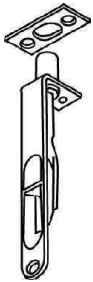


| TRIMCO# | 3928K              | 3928L              |
|---------|--------------------|--------------------|
| OA      | 1-9/16" X 6-13/16" | 1-9/16" X 6-13/16" |
|         | up to 90" rod      | up to 90" rod      |
| ROD     | 5/8", half round   | 5/8", half round   |

Br, Bz, Pl

### Cremone Bolt - Cast

Decorative Bolt for pairs of doors. Mortise and surface strikes included.  
 "K" supplied with oval knob. "L" supplied with lever operator.  
 Specify height and hand of door.



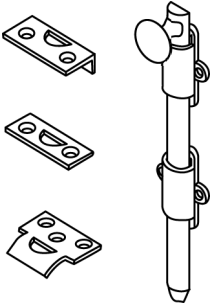
| TRIMCO# | 3999      |
|---------|-----------|
| OA      | 3/4" x 6" |
| TH      | 1"        |
| D       | 1/2" Bolt |
| BHMA    | L04201    |

Br, Bz, Pl

### Flushbolt - 6"

Corner Mount for unlisted wood doors. Add "SE" for Square Edges.

*TRIMCO means innovation!*



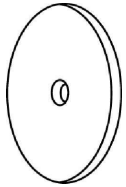
| TRIMCO#   | 3921 |
|---|------|
| <b>Heavy Duty Surface Bolt</b>  |      |
| Available in 8", 12", 18", 24". Please specify length and universal, angle or mortise strike. Custom lengths available. |      |



| TRIMCO# | 4873                  | 4874                  | 4876                  | 4882                   |
|---------|-----------------------|-----------------------|-----------------------|------------------------|
| L       | 3"                    | 4"                    | 6"                    | 12"                    |
| W       | 5/8"                  | 5/8"                  | 5/8"                  | 5/8"                   |
| TH      | 5/8"                  | 7/8"                  | 1"                    | 2-1/4"                 |
| BHMA    | L04151                | L04151                | L04151                | L04151                 |
|         | <b>Surface Bolt 3</b> | <b>Surface Bolt 4</b> | <b>Surface Bolt 6</b> | <b>Surface Bolt 12</b> |

Universal and Mortise strikes supplied.  
 Custom lengths available.

# DRAWER PULLS AND ACCESSORIES



| TRIMCO# | BP1  | BP2    | BP3    | BP4  |
|---------|------|--------|--------|------|
| D       | 1"   | 1-1/4" | 1-1/2" | 2"   |
| T       | 1/8" | 1/8"   | 1/8"   | 1/8" |

Br, Bz, Pl, SS

**Back Plates for Pulls**  
1/8" thick



| TRIMCO# | 283           | 284       |
|---------|---------------|-----------|
| OA      | 1/2" x 3-1/2" | 1/2" x 4" |
| CTC     | 3"            | 3-1/2"    |
| CL      | 3/4"          | 3/4"      |

Br, Bz, Pl

**Drawer Pull**



| TRIMCO# | 553           |
|---------|---------------|
| OA      | 5/8" x 3-1/4" |
| CTC     | 3"            |
| CL      | 3/4"          |
| BHMA    | B02012        |

Br, Bz, Pl

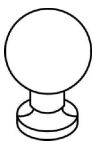
**Drawer Pull**



| TRIMCO# | 562-3    | 562-4   |
|---------|----------|---------|
| OA      | 3-13/16" | 4-5/16" |
| CTC     | 3-1/2"   | 4"      |
| CL      | 7/8"     | 7/8"    |
| D       | 5/16"    | 5/16"   |
| BHMA    | B02012   | B02012  |

Br, Bz, Pl, SS

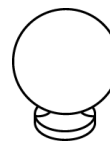
**Drawer Pull**



| TRIMCO# | 7300-1 | 7300-1-1/4 |
|---------|--------|------------|
| D       | 1"     | 1-1/4"     |
| P       | 15/16" | 1-1/8"     |

Br, Bz, Pl

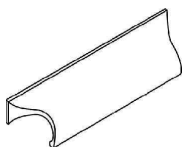
**Cabinet Knobs**



| TRIMCO# | 7301-1 | 7301-1-1/4 |
|---------|--------|------------|
| D       | 1"     | 1-1/4"     |
| P       | 1-1/4" | 1-1/2"     |

Br, Bz, Pl

**Cabinet Pull**

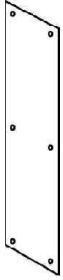


| TRIMCO# | 275-2  |
|---------|--------|
| CTC     | 2-1/2" |
| OA      | 3-1/2" |

Br, Bz, Pl

**Drawer Pull**

# PUSH AND PULL PLATES



| TRIMCO# | 1001-1   | 1001-2       | 1001-3   |
|---------|----------|--------------|----------|
| OA      | 3" x 12" | 3-1/2" x 15" | 4" X 16" |
| BHMA    | J301     | J301         | J301     |

Br, Bz, Pl, SS

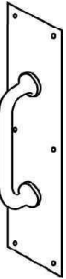
### Push Plate .050

| TRIMCO# | 1001-9   | 1001-11  | 1001-3P                   |
|---------|----------|----------|---------------------------|
| OA      | 6" x 16" | 8" x 16" | 4" X 16"                  |
|         |          |          | <b>Black Plastic 1/8"</b> |
| BHMA    | J301     | J301     | J301                      |

Br, Bz, Pl, SS

### Push Plate .050

Plastic Plates - .125 other standard colors and clear available.



| TRIMCO# | 1010-1   | 1010-2       | 1010-3   |
|---------|----------|--------------|----------|
| OA      | 3" x 12" | 3-1/2" x 15" | 4" X 16" |
| P       | 1-7/8"   | 1-7/8"       | 1-7/8"   |
| G       | 1117-1   | 1117-1       | 1117-1   |
| CL      | 1-1/2"   | 1-1/2"       | 1-1/2"   |
| CTC     | 5"       | 5"           | 5"       |
| BHMA    | J405     | J405         | J405     |

Br, Bz, Pl, SS

### Pull Plate - .050 - ADA



| TRIMCO# | 1012-2       | 1012-3   |
|---------|--------------|----------|
| OA      | 3-1/2" x 15" | 4" X 16" |
| P       | 2"           | 2"       |
| G       | 1109-1       | 1109-1   |
| CL      | 1-1/2"       | 1-1/2"   |
| CTC     | 5-1/2"       | 5-1/2"   |
| BHMA    | J405         | J405     |

Br, Bz, Pl, SS

### Pull Plate - .050 - ADA

NOTE: All Metal Plates on this page are .050" thick.  
Custom sizes available.



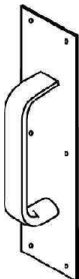
# PULL PLATES



| TRIMCO# | 1013-2      | 1013-2B      | 1013-3   | 1013-3B  |
|---------|-------------|--------------|----------|----------|
| OA      | 3-1/2" x 15 | 3-1/2" x 15" | 4" x 16" | 4" x 16" |
| P       | 2"          | 2"           | 2"       | 2"       |
| G       | 1193-1      | 1193-2       | 1193-1   | 1193-2   |
| CL      | 1-1/2"      | 1-1/2"       | 1-1/2"   | 1-1/2"   |
| CTC     | 5-1/2"      | 8"           | 5-1/2"   | 8"       |
| BHMA    | J405        | J405         | J405     | J405     |

Br, Bz, Al, SS

### Pull Plate - ADA



| TRIMCO# | 1014-2      | 1014-2B      | 1014-3   | 1014-3B  |
|---------|-------------|--------------|----------|----------|
| OA      | 3-1/2" x 15 | 3-1/2" x 15" | 4" x 16" | 4" x 16" |
| P       | 2"          | 2"           | 2"       | 2"       |
| G       | 1199-1      | 1199-2       | 1199-1   | 1199-2   |
| CL      | 1-1/2"      | 1-1/2"       | 1-1/2"   | 1-1/2"   |
| CTC     | 6"          | 8"           | 6"       | 8"       |
| BHMA    | J405        | J405         | J405     | J405     |

Br, Bz, Al, SS

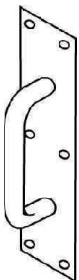
### Pull Plate - ADA



| TRIMCO# | 1015-2      | 1015-2B      | 1015-3   | 1015-3B  |
|---------|-------------|--------------|----------|----------|
| OA      | 3-1/2" x 15 | 3-1/2" x 15" | 4" x 16" | 4" x 16" |
| P       | 2"          | 2"           | 2"       | 2"       |
| G       | 1139-1      | 1139-2       | 1139-1   | 1139-2   |
| CL      | 1-1/2"      | 1-1/2"       | 1-1/2"   | 1-1/2"   |
| CTC     | 6"          | 8"           | 6"       | 8"       |
| BHMA    | J405        | J405         | J405     | J405     |

Br, Bz, Al, SS

### Pull Plate - ADA



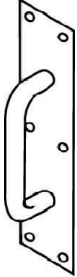
| TRIMCO# | 1017-2      | 1017-2B      | 1017-3   | 1017-3B  |
|---------|-------------|--------------|----------|----------|
| OA      | 3-1/2" x 15 | 3-1/2" x 15" | 4" x 16" | 4" x 16" |
| P       | 2"          | 2"           | 2"       | 2"       |
| G       | 1194-1      | 1194-2       | 1194-1   | 1194-2   |
| CL      | 1-1/2"      | 1-1/2"       | 1-1/2"   | 1-1/2"   |
| CTC     | 6"          | 8"           | 6"       | 8"       |
| BHMA    | J705        | J705         | J705     | J705     |

Br, Bz, Al, SS

### Pull Plate - ADA

NOTE: All Plates on this page are .050" thick.  
 "B" Suffix indicates next larger size grip  
 Custom sizes available.

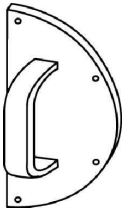
# PUSH / PULL PLATES



| TRIMCO# | 1018-3   | 1018-3B  |
|---------|----------|----------|
| OA      | 4" X 16" | 4" x 16" |
| P       | 3-1/8"   | 3-1/8"   |
| G       | 1195-1   | 1195-2   |
| CL      | 2"       | 2"       |
| CTC     | 8"       | 10"      |
| BHMA    | J405     | J405     |

Br, Bz, Al, SS

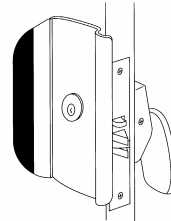
**Pull Plate - .050 - ADA**



| TRIMCO# | 1056-4           |
|---------|------------------|
| OA      | 1/16" x 8" x 16" |
| P       | 1-7/8"           |
| G       | 1139-2           |
| CL      | 1-1/2"           |
| CTC     | 8"               |
| BHMA    | J405             |

Br, Bz, SS

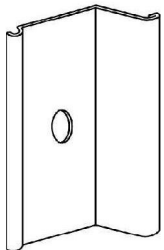
**Pull Plate - .050" thick. ADA**  
Specific **1041-4** for plate only.



| TRIMCO#  | 1096TL          |
|----------|-----------------|
| OA (Ext) | 11" x 7"        |
| P (Ext)  | 1-7/8"          |
| OA (Int) | 2-5/8" x 4-7/8" |
| P (Int)  | 2-1/2"          |

Br, Bz, SS

**Push Paddle x Mortise Lock x Anti-Vandal Handle - ADA**



| TRIMCO# | 1090            |
|---------|-----------------|
| OA      | 1/8" x 7" x 12" |
| CL      | 1-1/2"          |

Br, Bz, SS

### Anti Vandal Trim

Fills the need to fortify exposed doors at schools, parks, public buildings and rear doors of commercial and industrial buildings. Patent #354,670

**Specify 1091 Anti-Vandal Pull – No Astragal**

**Specify 1092 Anti-Vandal Pull – Narrow Stile Door**



| TRIMCO#                               | 1098RG |
|---------------------------------------|--------|
| <b>Safety and Security Lock Set –</b> |        |

For details see 1098RG brochure.

### 1096TL TUF-LOK System –

Anti-Vandal Trim System includes: 1562M Push latch with modified paddle, the Anti-Vandal Trim Pull Handle, and Mortise Lock. Customer supplies the cylinder.

Also Available:

### 1097TL - No Astragal

Options Available:

**XX** = Lugs mated to Mortise Lock if other than Corbin-Russwin.

**FC** = Flush Cylinder. Specify 1-1/4" or 1-1/2" diameter

**CYL** = if customer wants TRIMCO to supply the Cylinder, one will be supplied as customer Specifies.

### ADA

### 1096HA - Anti-Vandal Trim Handle Only

Same Anti-Vandal Trim used in TUF-LOK System, but Trim Handle only.

Specify Handing.

Also Available:

### 1097HA - No Astragal

Options Available:

**SP** = Lugs mated to Dead Bolt, Panics, Rim and Exit devices.

**FC** = Flush Cylinder. Specify 1-1/4" or 1-1/2" dia.

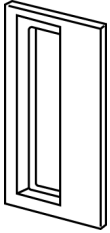
**NC** = No Cylinder Cutout Required

**BTB** = Special Back-to-Back Mounting

Specify Handing

### ADA

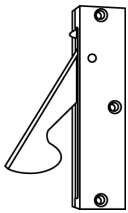
# DOOR PULLS



| TRIMCO# | 1060            | 1061             |
|---------|-----------------|------------------|
| OA      | 2-3/4" x 4-1/4" | 2-1/16" x 3-1/8" |
| DP      | 13/16"          | 5/8"             |
| BHMA    | J403            | J403             |

Br, Bz, PI

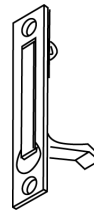
**Flush Pull** - Fine finish casting with black interior. Specify for same finish inside cup and outside.



| TRIMCO# | 1062                |
|---------|---------------------|
| OA      | 5/16" x 1" x 4-1/4" |

Br, Bz, PI

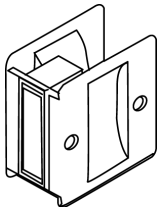
**Concealed Door Pull**  
Non-handed. Side Mount. Mortises into edge and face of pocket door



| TRIMCO# | 1063          |
|---------|---------------|
| OA      | 3/4" x 3-7/8" |

Br, Bz, PI

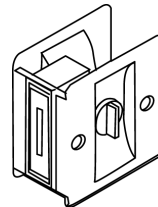
**Concealed Door Pull**  
Edge Mount.



| TRIMCO# | 1064            |
|---------|-----------------|
| OA      | 2-1/2" x 2-3/4" |
| BHMA    | D08021          |

Br, Bz, PI

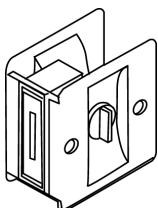
**Pocket Door Pull**  
Passage Function.  
1-3/8" and 1-3/4" Thick Doors.  
For use on doors not requiring privacy.



| TRIMCO# | 1065            |
|---------|-----------------|
| OA      | 2-1/2" x 2-3/4" |
| BHMA    | D08031          |

Br, Bz, PI

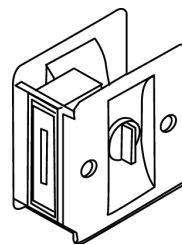
**Pocket Door Pull \***  
Privacy Function. 1-3/8" Thick Doors. For use on bathroom and bedroom doors. Thumb turn on interior, safety release on exterior.



| TRIMCO# | 1065PA          |
|---------|-----------------|
| OA      | 2-1/2" x 2-3/4" |
| BHMA    | D08031          |

Br, Bz, PI

**Sliding Door Lock \***  
For use on patio and exterior doors. Thumb turn on interior only.

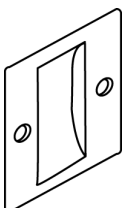


| TRIMCO# | 1065CD          |
|---------|-----------------|
| OA      | 2-1/2" X 2-3/4" |
| BHMA    | D08031          |

Br, Bz, PI

**Sliding Door Lock \***  
For use on connecting doors. Thumb turn on both sides.

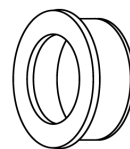
\* Can be made to fit 1-3/4" Thick Door, must specify when ordering.



| TRIMCO# | 1064FCP         |
|---------|-----------------|
| OA      | 2-1/2" x 2-3/4" |
| BHMA    | D02202          |

Br, Bz, PI

**Flush Cup Pull**  
Can be used for pairs of doors.

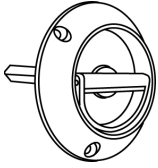


| TRIMCO# | 1059   |
|---------|--------|
| OD      | 2-1/2" |
| ID      | 1-3/4" |
| DP      | 7/8"   |

Br, Bz, PI

**Flush Cup Pull**  
Use #7059 for Focal styling.

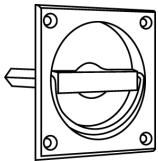
# FLUSH PULLS



| TRIMCO# | 1066S   | 1066S-516 | 1066S-38 |
|---------|---------|-----------|----------|
| D       | 3-9/16" | 3-9/16"   | 3-9/16"  |
| S       | 9/32"   | 5/16"     | 3/8"     |

Br, Bz, PI

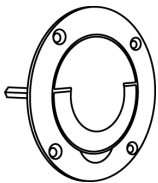
**Flush Pull - Cast**  
Spindle Type. Surface Mount.



| TRIMCO# | 1067    | 1067-516 | 1067-38 |
|---------|---------|----------|---------|
| OA      | 3" x 3" | 3" x 3"  | 3" x 3" |
| D       | 2-1/2"  | 2-1/2"   | 2-1/2"  |
| S       | 9/32"   | 5/16"    | 3/8"    |

Br, Bz, PI

**Flush Pull - Cast**  
Spindle Type

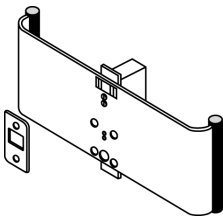


| TRIMCO# | 1068   | 1068-516 | 1068-38 |
|---------|--------|----------|---------|
| D       | 4-1/4" | 4-1/4"   | 4-1/4"  |
| S       | 9/32"  | 5/16"    | 3/8"    |

Br, Bz, PI

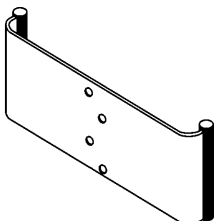
**Flush Pull - Cast**  
Spindle Type. Surface Mount.

NOTE: Spindle set on diamond standard, can be set on square. Specify.  
No interference with standard mortise lock case on 1-3/4" doors.  
For special prep specify lockset. Extra Charge.



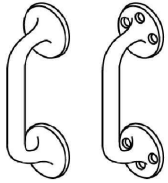
**TRIMCO# 1069L**  
Br, Bz, SS

**Sliding Door Pull Latching**  
Pocket Door Pull,  
Standard model for walls 6" thick.  
Larger available. Specify. Custom  
sizes available – specify. **ADA**

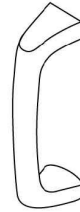


**TRIMCO# 1069**  
Br, Bz, SS

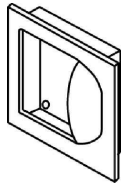
**Sliding Door Pull**  
Non-Latching. Passage Only.  
Black nylon handles.  
Custom sizes available – specify  
**ADA**  
See 1069 brochure for more information



| TRIMCO#            | 1102S   | 1102T          |
|--------------------|---------|----------------|
| OA                 | 7-1/2"  | 7-1/2"         |
| P                  | 2-3/16" | 2-3/16"        |
| CL                 | 1-1/2"  | 1-1/2"         |
| CTC                | 5-1/2"  | 5-1/2"         |
| BHMA               | J401    | J401           |
| <b>Pull - Cast</b> | Surface | Thru-bolt      |
| <b>ADA</b>         | Mount   | Mount          |
|                    |         | Br, Bz, Pl, Al |

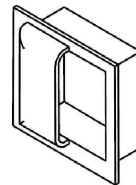
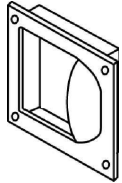


| TRIMCO#            | 1109-1         |
|--------------------|----------------|
| OA                 | 6-3/16"        |
| P                  | 1-7/8"         |
| CL                 | 1-1/2"         |
| CTC                | 5-1/2"         |
| BHMA               | J401           |
|                    | Br, Bz, Al, Pl |
| <b>Pull - Cast</b> |                |
| <b>ADA</b>         |                |



| TRIMCO# | 1111A/1111B |
|---------|-------------|
| OA      | 5" x 5"     |
| DP      | 1-1/8"      |
| BHMA    | J403        |
|         | Br, Bz, SS  |

**Flush Pull - Anti-Vandal**  
 Mounting Lugs on back of Cup.  
 Specify 1111B for mounting on face.  
 For high-traffic, exposed, rough-service areas. Specially engineered as exit trim on school doors with interior, panic hardware. Easy exterior access during the day; vandal resistant at night.  
**ADA** Patent pending



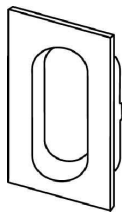
| TRIMCO# | 1111C      |
|---------|------------|
| OA      | 6" x 6"    |
| DP      | 1-1/2"     |
| BHMA    | J403       |
|         | Br, Bz, SS |

**Flush Pull - Anti-Vandal**  
 Meets California Access Requirements. **ADA**  
 See 1111C brochure for more information.



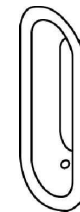
| TRIMCO # | 242        |
|----------|------------|
| D        | 2-1/2"     |
| DP       | 3/8"       |
|          | Br, Bz, Pl |

**Standard Flush Pull**  
 For sliding doors.  
 Stamped.



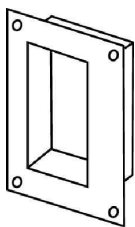
| TRIMCO# | 1113        |
|---------|-------------|
| OA      | 1-1/4" x 3" |
| DP      | 13/32"      |
|         | Br, Bz, Pl  |

**Flush Pull - Cast**  
 For Sliding doors only.



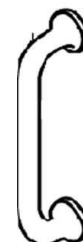
| TRIMCO# | 248         |
|---------|-------------|
| OA      | 1-1/2" x 4" |
| DP      | 7/16"       |
|         | Br, Bz, Pl  |

**Standard Flush Pull**  
 For sliding doors.  
 Stamped.



| TRIMCO# | 1115            |
|---------|-----------------|
| OA      | 3-1/2" x 4-3/4" |
| DP      | 13/16"          |
| BHMA    | J403            |
|         | Br, Bz, SS      |

**Flush Pull**  
 Specify 1115B for pair of 1115 prepped for BTB mounting.



| TRIMCO# | 1117-1     |
|---------|------------|
| OA      | 6-1/8"     |
| P       | 1-7/8"     |
| CTC     | 5"         |
| CL      | 1-1/2"     |
| BHMA    | J401       |
|         | Br, Bz, Pl |

**Pull - Cast**  
**ADA**

# fOCAL



|                |             |
|----------------|-------------|
| <b>TRIMCO#</b> | <b>1120</b> |
| OA             | 7-1/2"      |
| P              | 2-1/2"      |
| CTC            | 6"          |
| CL             | 1-7/8"      |
| BHMA           | J401        |

Br, Bz, Pl

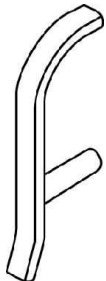
**Classic Pitcher Grip - Cast**  
**ADA**



|                |             |
|----------------|-------------|
| <b>TRIMCO#</b> | <b>1134</b> |
| OA             | 9-1/16"     |
| P              | 3-1/2"      |
| CTC            | 5"          |
| CL             | 2"          |
| BHMA           | J401        |

Br, Bz, Pl

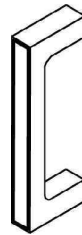
**Hospital Grip - Cast**  
Specify **1134B** for pair of 1134  
prepped for BTB mounting. **ADA**



|                |             |
|----------------|-------------|
| <b>TRIMCO#</b> | <b>1135</b> |
| OA             | 9"          |
| M              | 3/8" x 3/4" |
| P              | 3-3/16"     |
| CTC            | 6"          |
| CL             | 2"          |
| BHMA           | J401        |

Br, Bz, SS

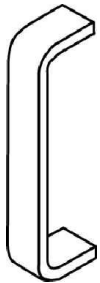
**Hospital Grip**  
**ADA**



|                |             |
|----------------|-------------|
| <b>TRIMCO#</b> | <b>1136</b> |
| OA             | 7-3/8"      |
| P              | 2-1/16"     |
| CTC            | 6-1/4"      |
| CL             | 1-1/2"      |

Br, Bz, Pl

**Grip - Cast**  
Specify **1136G** for pair of 1136  
prepped for BTB mounting. **ADA**



| <b>TRIMCO#</b> | <b>1139-1</b> | <b>1139-2</b> |
|----------------|---------------|---------------|
| OA             | 6-3/8"        | 8-3/8"        |
| M              | 1" x 3/8"     | 1" x 3/8"     |
| P              | 1-7/8"        | 1-7/8"        |
| CTC            | 6"            | 8"            |
| CL             | 1-1/2"        | 1-1/2"        |
| BHMA           | J401          | J401          |

Br, Bz, Al, SS

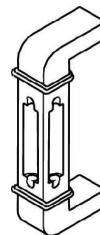
**Grip**  
**ADA**



|                |                 |
|----------------|-----------------|
| <b>TRIMCO#</b> | <b>1147</b>     |
| OA             | 10-1/2"         |
| M              | 1-1/2" x 1-1/2" |
| P              | 2-7/8"          |
| CTC            | 10"             |
| CL             | 1-5/8"          |
| BHMA           | J402            |

SS

**Grip**  
Specify **1147B** for pairs, mounted  
Back to Back with Mounting Plates.  
Other lengths available. **ADA**



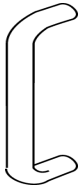
|                |               |
|----------------|---------------|
| <b>TRIMCO#</b> | <b>1183-1</b> |
| OA             | 5-1/2"        |
| P              | 2-1/8"        |
| CTC            | 5"            |
| CL             | 1-1/4"        |

Br, Bz, Pl

**Grip - Cast**  
**ADA**

**NOTE:** All Grips may be mounted to a variety of standard and custom plates.

# GRIPS

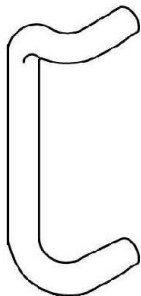


| TRIMCO# | 1150       | 1151       |
|---------|------------|------------|
| OA      | 6-1/2"     | 8-1/2"     |
| M       | 1/2" Round | 1/2" Round |
| P       | 2"         | 2"         |
| CTC     | 6"         | 8"         |
| CL      | 1-1/2"     | 1-1/2"     |
| BHMA    | J401       | J401       |

Br, Bz, Pl, SS

### Grip

Custom BTB mounting available. **ADA**



| TRIMCO# | 1191-1     | 1191-2     | 1191-3   | 1191-4   |
|---------|------------|------------|----------|----------|
| OA      | 8-3/4"     | 10-3/4"    | 11"      | 13"      |
| M       | 3/4" Round | 3/4" Round | 1" Round | 1" Round |
| P       | 2-3/4"     | 2-3/4"     | 3-1/4"   | 3-1/4"   |
| CTC     | 8"         | 10"        | 10"      | 12"      |
| CL      | 2"         | 2"         | 2-1/4"   | 2-1/4"   |
| BHMA    | J402       | J402       | J402     | J402     |

Br, Bz, Pl, SS

### Grip

fOCAL option is available. **ADA**

| TRIMCO# | 1191-4J      | 1191-5   | 1191-5J      |
|---------|--------------|----------|--------------|
| OA      | 13-1/4"      | 18"      | 19-1/4"      |
| M       | 1-1/4" Round | 1" Round | 1-1/4" Round |
| P       | 3-1/4"       | 3-1/4"   | 3-1/4"       |
| CTC     | 12"          | 18"      | 18"          |
| CL      | 2-1/4"       | 2-1/4"   | 2-1/4"       |
| BHMA    | J402         | J402     | J402         |

Br, Bz, Pl, SS

### Grip Offset

fOCAL option is available. **ADA**



| TRIMCO# | 1193-1            | 1193-2            |
|---------|-------------------|-------------------|
| OA      | 6"                | 8"                |
| M       | 1/2" X 3/4" Round | 1/2" x 3/4" Round |
| P       | 2"                | 2"                |
| CTC     | 5-1/2"            | 8"                |
| CL      | 1-1/2"            | 1-1/2"            |
| BHMA    | J401              | J401              |

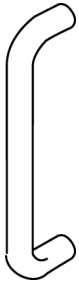
Br, Bz, Pl, SS

### Grip Offset

fOCAL option is available. **ADA**

**Standard Mountings** - See Page 3.

# GRIPS

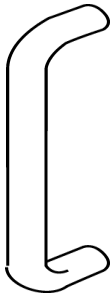


| TRIMCO# | 1194-1     | 1194-2     | 1194-3     | 1194-4     |
|---------|------------|------------|------------|------------|
| OA      | 6-3/4"     | 8-3/4"     | 10-3/4"    | 12-3/4"    |
| M       | 3/4" Round | 3/4" Round | 3/4" Round | 3/4" Round |
| P       | 2-3/4"     | 2-3/4"     | 2-3/4"     | 2-3/4"     |
| CTC     | 6"         | 8"         | 10"        | 12"        |
| CL      | 2"         | 2"         | 2"         | 2"         |
| BHMA    | J401       | J401       | J401       | J401       |

Br, Bz, Pl, SS

### Grip

Custom BTB mounting available. **ADA**

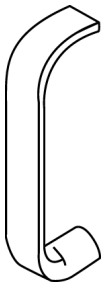


| TRIMCO# | 1195-1   | 1195-2   | 1195-3   | 1195-6   | 1195-3J   | 1195-6J   |
|---------|----------|----------|----------|----------|-----------|-----------|
| OA      | 9"       | 11"      | 13"      | 19"      | 13-1/4"   | 19-1/4"   |
| M       | 1" Round | 1" Round | 1" Round | 1" Round | 1-1/4" Rd | 1-1/4" Rd |
| P       | 3"       | 3"       | 3"       | 3"       | 3-1/2"    | 3-1/2"    |
| CTC     | 8"       | 10"      | 12"      | 18"      | 12"       | 18"       |
| CL      | 2"       | 2"       | 2"       | 2"       | 2-1/4"    | 2-1/4"    |
| BHMA    | J401     | J401     | J401     | J401     | J401      | J401      |

Br, Bz, Pl, SS

### Grip

fOCAL option is available. **ADA**

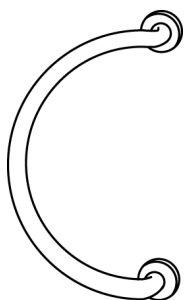


| TRIMCO# | 1199-1        | 1199-2        |
|---------|---------------|---------------|
| OA      | 6-1/2"        | 8-1/2"        |
| M       | 1" Half Round | 1" Half Round |
| P       | 2"            | 2"            |
| CTC     | 6"            | 8"            |
| CL      | 1-1/2"        | 1-1/2"        |
| BHMA    | J401          | J401          |

Br, Bz, Pl, SS

### Grip Offset

**ADA**



BP Shown

| TRIMCO# | 1748             | 1748-1   |
|---------|------------------|----------|
| OA      | 6-3/4" x 12-3/4" | 7" x 13" |
| M       | 3/4" Round       | 1" Round |
| P       | 3-3/8"           | 3-1/2"   |
| CTC     | 12"              | 12"      |
| CL      | 2-5/8"           | 2-1/2"   |
| BHMA    | J402             | J402     |

Br, Bz, Pl, SS

### Grip Offset

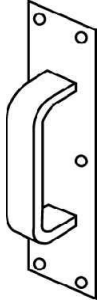
fOCAL option is available. Priced individually. Style plates required, specify. **ADA**

**NOTE:** These pulls are covered by warranty if ordered with BP4 Back Plates ad "L" or "M" mounting.

**Standard Mountings - See Page 3.**

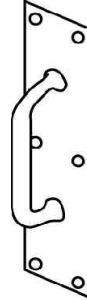


# HEAVY GAUGE PUSH / PULL PLATES



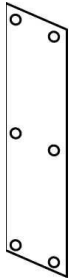
|                |                 |
|----------------|-----------------|
| <b>TRIMCO#</b> | <b>1802-4</b>   |
| OA             | 1/8" x 4" x 16" |
| P              | 2"              |
| G              | 1139-1          |
| PP             | 1807-4          |
| CL             | 1-3/4"          |
| CTC            | 6"              |
| BHMA           | J407            |
|                | Br, Bz, Pl      |

**Pull Plate**  
Beveled top and bottom  
**ADA**



|                |                 |
|----------------|-----------------|
| <b>TRIMCO#</b> | <b>1804-4</b>   |
| OA             | 1/8" x 4" x 16" |
| P              | 2-1/4"          |
| G              | 1117-1          |
| PP             | 1807-4          |
| CL             | 1-1/2"          |
| CTC            | 5"              |
| BHMA           | J407            |
|                | Br, Bz, SS      |

**Pull Plate**  
Beveled top and bottom  
**ADA**



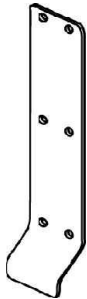
|                |                 |
|----------------|-----------------|
| <b>TRIMCO#</b> | <b>1807-4</b>   |
| OA             | 1/8" x 4" x 16" |
| BHMA           | J304            |
|                | Br, Bz, SS      |

**Push Plate**  
Beveled top and bottom



|                |                 |
|----------------|-----------------|
| <b>TRIMCO#</b> | <b>1809-4</b>   |
| OA             | 1/8" x 4" x 16" |
| BHMA           | J304            |
|                | Br, Bz, SS      |

**Push Plate**  
Beveled four sides



|                |                         |                     |
|----------------|-------------------------|---------------------|
| <b>TRIMCO#</b> | <b>1820</b>             | <b>1820-11</b>      |
| OA             | 1/8" x 3-1/2" x 16-1/2" | 1/8" x 8" x 16-1/2" |
| P              | 1-1/2"                  | 1-1/8"              |
| CL             | 1-1/8"                  | 1-1/8"              |
| BHMA           | J303                    | J303                |
|                |                         | Br, Bz, SS          |

**Push / Pull Plate**



1822-1



1822-2

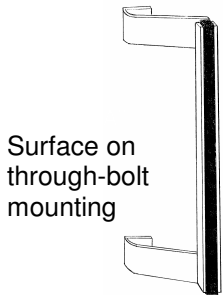
|                |                    |                    |
|----------------|--------------------|--------------------|
| <b>TRIMCO#</b> | <b>1822</b>        | <b>1822-2</b>      |
| OA             | 1/8" x 2" x 3-3/4" | 1/8" x 3" x 4-1/2" |
| P              | 7/8"               | 7/8"               |
| CL             | 3/4"               | 3/4"               |
|                |                    | Br, Bz, SS         |

**Cylinder Pull**  
Specify **1822-1** for  
1821 with no  
Cylinder cut-out.

**Cylinder Pull**  
for Dead Bolt only.  
2-1/8" opening.

**NOTE:** All 1800 Series plates are 1/8" thick.

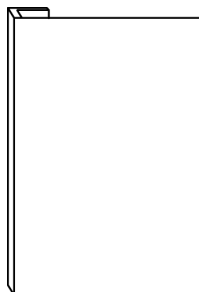
# PUSH AND PULL PLATES



| TRIMCO# | 9560                     | 9561                       |
|---------|--------------------------|----------------------------|
| OA      | 3-1/2" x 11-3/8"         | 3-1/2" x 11-3/8"           |
| M       | 628 Pull<br>x 628 Insert | 628 Pull<br>x Black Insert |
| P       | 2-7/8"                   | 2-7/8"                     |
| CTC     | 10"                      | 10"                        |
| BR      | A                        | A                          |

**Offset Entrance Door Pull**  
Aluminum Pull x Insert **ADA**

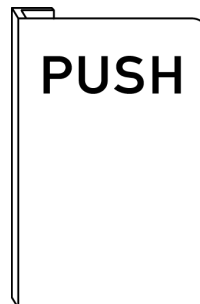
Al



| TRIMCO# | 9550                 |
|---------|----------------------|
| OA      | 3/16" x 6" x 9" Lgth |
| M       | Ext. Aluminum        |
| P       | 1-1/2"               |
| CTC     | 7"                   |
| CL      | 1-1/4"               |

Al

**Push / Pull**  
Square corners. Smooth, Clean surface is ideal for engraving (extra cost). **ADA** when mounted on narrow stile aluminum doors.



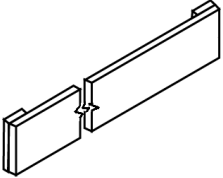
| TRIMCO# | 9551                 |
|---------|----------------------|
| OA      | 3/16" x 6" x 9" Lgth |
| M       | Ext. Aluminum        |
| P       | 1-1/2"               |
| CTC     | 7"                   |
| CL      | 1-1/4"               |

Al

Round corners. Smooth, Clean surface is ideal for engraving (extra cost). **ADA** when mounted on narrow stile aluminum doors.

NOTE: Push/Pull Bars and Sets are custom made and not returnable. Specify Center to Center where appropriate. **Standard Mountings** - See Page 3.

# RUGGED, STYLISH PUSH AND PULL BARS

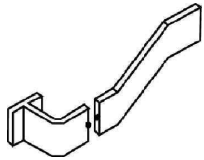


| TRIMCO# | 1630          | 1630B                            |
|---------|---------------|----------------------------------|
| P       | 3/4"          | 3/4" exterior, 7/8" interior bar |
| CTC     | Specify       | Specify                          |
| M       | 3/8" x 2-1/2" | 3/8" x 2-1/2"                    |
| BHMA    | J501          | J501                             |

Br, Bz, Pl, SS

**Push Bar** (single bar)

**Push Bar** (Pair, BTB)



| TRIMCO# | 1633          |
|---------|---------------|
| P       | 3-1/8"        |
| CTC     | Specify       |
| M       | 3/8" x 2-1/2" |
| BHMA    | J501          |

Br, Bz, Pl, SS

**Push Bar**  
Single Bar  
**ADA**



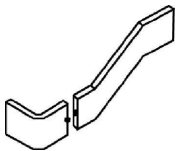
| TRIMCO# | 1633-1        |
|---------|---------------|
| P       | 3-1/4"        |
| CTC     | 14"           |
| M       | 3/8" x 1-1/2" |

Br, Bz, Pl, SS

**Push Bar**  
Single Bar  
**ADA**

NOTE: Push/Pull Bars and Sets are custom made and not returnable. Specify Center to Center where appropriate.

**Standard Mountings** - See Page 3.



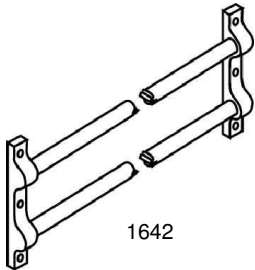
| TRIMCO# | 1637          |
|---------|---------------|
| P       | 2-1/2"        |
| CTC     | Specify       |
| M       | 3/8" x 1-1/4" |
| BHMA    | J501          |

Less pad

Br, Bz, Al, SS, Pl

**Push Bar**  
Single Bar  
**ADA**

# PUSH AND PULL BARS

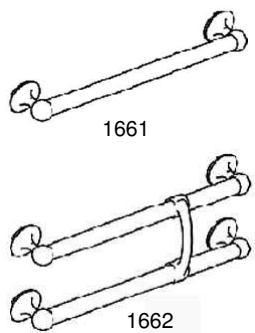


1642

| TRIMCO# | 1642          | 1643         | 1644         |
|---------|---------------|--------------|--------------|
| BR      | 5/8" x 5-1/2" | 5/8" x 8"    | 5/8" x 11"   |
| D       | 5/8"          | 5/8"         | 5/8"         |
| P       | 1"            | 1"           | 1"           |
| CTC     | Specify       | Specify      | Specify      |
| M       | 5/8" OD Tube  | 5/8" OD Tube | 5/8" OD Tube |
| BHMA    | J501          | J501         | J501         |
|         | 2 Bar Set     | 3 Bar Set    | 4 Bar Set    |

Br, Bz, PI

## Push Bar Set



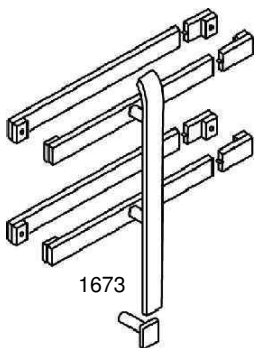
1661

1662

| TRIMCO# | 1661       | 1662           | 1663                        |
|---------|------------|----------------|-----------------------------|
| D       | 1"         | 1"             | 1"                          |
| P       | 2-1/2"     | 2-1/2"         | 2-1/2"                      |
| GP      |            | 3-1/2"         | 3-1/2"                      |
| CTC     | Specify    | Specify        | Specify                     |
| M       | 1" OD Tube | 1" OD Tube     | 1" OD Tube                  |
| BHMA    | J501       | J502           | J504                        |
|         | Single Bar | 2 Bar and Grip | 4 Bar and Grip<br>(2 sides) |

Br, Bz, PI

## Push Bar Set ADA



1673

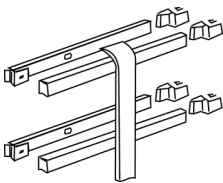
| TRIMCO# | 1671          | 1672                       | 1673                        |
|---------|---------------|----------------------------|-----------------------------|
| GP      |               | 2-1/2"                     | 2-1/2"                      |
| CTC     | Specify       | Grip - 8"<br>Bar - Specify | Grip - 8"<br>Bar - Specify  |
| M       | 3/8" x 1-1/4" | 3/8" x 1-1/4"              | 3/8" x 1-1/4"               |
| BHMA    | J501          | J502                       | J504                        |
|         | Single Bar    | 2 Bar and Grip             | 4 Bar and Grip<br>(2 sides) |

Br, Bz, AI, SS

## Push Bar Set ADA

NOTE: Push/Pull Bars and Sets are custom made and not returnable.  
Specify Center to Center where appropriate.  
**Standard Mountings - See Page 3.**

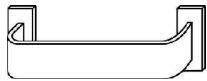
## PUSH / PULL BARS AND SETS



| TRIMCO# | 1682                        | 1683                        |
|---------|-----------------------------|-----------------------------|
| GP      | 2-1/2"                      | 2-1/2"                      |
| BP      | 3/4"                        | 3/4"                        |
| CTC     | Grips – 8"<br>Bar – Specify | Grips – 8"<br>Bar – Specify |
| M       | 3/8" x 1-1/4"               | 3/8" x 1-1/4"               |
| BHMA    | J502                        | J504                        |
|         | 2 Bars and Pull             | 4 Bars and Pull (2 sides)   |

Br, Bz, Pl, SS

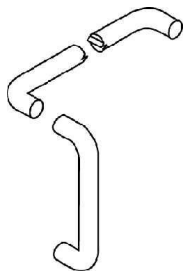
**Push Bar Set  
ADA**



| TRIMCO# | 1633          |
|---------|---------------|
| P       | 3-1/8"        |
| CTC     | Specify       |
| M       | 3/8" x 2-1/2" |
| BHMA    | J501          |

Br, Bz, Pl, SS

**Push Bar  
Single Bar  
ADA**



| TRIMCO# | 1729                         | 1731                         | 1732                         | 1746                         | 1746-1                       |
|---------|------------------------------|------------------------------|------------------------------|------------------------------|------------------------------|
| D       | 3/4"                         | 1"                           | 1"                           | 1-1/4"                       | 1-1/4"                       |
| P       | 3"                           | 3-1/4"                       | 3-1/4"                       | 3-1/2"                       | 3-1/2"                       |
| CTC     | Pull – 10"<br>Push - Specify | Pull – 10"<br>Push - Specify | Pull – 12"<br>Push - Specify | Pull – 18"<br>Push - Specify | Pull – 12"<br>Push - Specify |
| M       | 3/4" Round                   | 1" Round                     | 1" Round                     | 1-1/4" Round                 | 1-1/4" Round                 |
| BHMA    | J504                         | J504                         | J504                         | J504                         | J504                         |

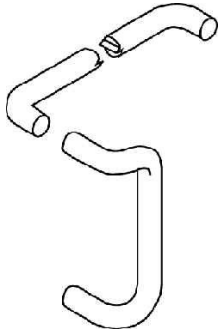
Br, Bz, Al, SS

**Push / Pull Bar Set  
fOCAL option is available  
ADA**

NOTE: Push/Pull Bars and Sets are custom made and not returnable. Specify Center to Center where appropriate.

**Standard Mountings** – See page 3.

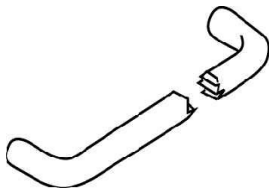
## PUSH / PULL BARS AND SETS



| TRIMCO# | 1737                         | 1738                         | 1747                         | 1747-1                       |
|---------|------------------------------|------------------------------|------------------------------|------------------------------|
| D       | 1"                           | 1"                           | 1-1/4"                       | 1-1/4"                       |
| P       | 3-1/4"                       | 3-1/4"                       | 3-1/2"                       | 3-1/2"                       |
| CTC     | Pull – 10"<br>Push – Specify | Pull – 12"<br>Push – Specify | Pull – 18"<br>Push – Specify | Pull – 12"<br>Push – Specify |
| M       | 1" Round                     | 1" Round                     | 1-1/4" Round                 | 1-1/4" Round                 |
| BHMA    | J504                         | J504                         | J504                         | J504                         |

Br, Bz, Pl, Al, SS

**Push / Pull Set**  
fOCAL option is available  
**ADA**



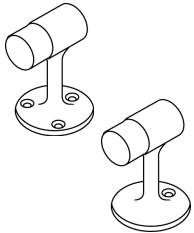
| TRIMCO# | 1740       | 1741     | 1745         |
|---------|------------|----------|--------------|
| D       | 3/4"       | 1"       | 1-1/4"       |
| P       | 3"         | 3-1/4"   | 3-1/2"       |
| CTC     | Specify    | Specify  | Specify      |
| M       | 3/4" Round | 1" Round | 1-1/4" Round |
| BHMA    | J501       | J501     | J501         |

Br, Bz, Pl, Al, SS

**Push Bar**  
fOCAL option is available  
**ADA**

NOTE: Push/Pull Bars and Sets are custom made and not returnable.  
Specify Center to Center where appropriate.  
**Standard Mountings - See Page 3.**

# STOPS

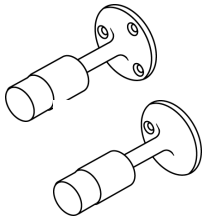


| TRIMCO# | 1201   | 1201-5 | 1201CK |
|---------|--------|--------|--------|
| B       | 2-1/4" | 3"     | 2-3/4" |
| H       | 3"     | 5"     | 3"     |
| BHMA    | L02131 | L02131 | L02131 |

Br, Bz, Pl, SS

### Floor Stop - Cast

1201CK is a heavy duty, high-abuse school design with reduces tampering and loss of rubber bumper. For surface mounting with wood screws, use 1200.

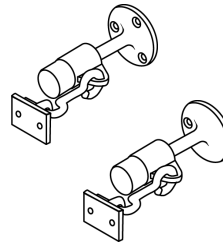


| TRIMCO# | 1205          |
|---------|---------------|
| P       | 3-1/8"        |
| CTC     | Specify       |
| M       | 3/8" x 2-1/2" |
| BHMA    | J501          |

Br, Bz, Pl

### Base Stop

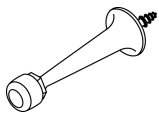
For surface mounting with wood screws, use 1204.



| TRIMCO# | 1207          |
|---------|---------------|
| B       | 2-1/4"        |
| P       | 3-3/4"        |
| EYE     | 7/8" x 2-1/4" |
| HOOK    | 2-3/4"        |
| BHMA    | L01351        |

### Base Stop and Holder - Cast

For surface mounting with wood screws, use 1206.



| TRIMCO# | 1208    |
|---------|---------|
| B       | 1-3/16" |
| P       | 3-1/4"  |
| BHMA    | L02031  |

Br, Bz, Pl

### Base Stop - Cast WS.



| TRIMCO# | 1209   |
|---------|--------|
| B       | 1-1/4" |
| H       | 2"     |

Pl

### Heavy Duty Stop

Ideal for high abuse installations like prisons, schools, heavy doors. Installs with quick-set cement. Requires 1-1/2" diameter cored hole.

Available for wall mount #1209W, hold open feature #1209HO, and #1209HA with extra strong stainless steel shaft and larger rubber.

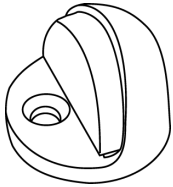


| TRIMCO# | W1211       |
|---------|-------------|
| R       | 1/8"        |
| B       | 1-3/4" x 2" |
| H       | 1"          |
| M       | Wrought     |
| BHMA    | L02141      |

Br, Bz, SS

### Universal Dome Stop Patent #4,209,876

# STOPS AND RISERS

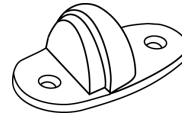


|                |               |
|----------------|---------------|
| <b>TRIMCO#</b> | <b>1211</b>   |
| R              | .22"          |
| B              | 1-1/2"        |
| H              | 1.43"         |
| M              | CAST          |
| BHMA           | L02141/L02161 |

Br, Bz, Pl

### Universal Dome Stop

See 1211 Brochure.



|                |                |
|----------------|----------------|
| <b>TRIMCO#</b> | <b>1215CKU</b> |
| H              | 1-1/2"         |
| L              | 3/16"          |
| CTC            | 2-1/5"         |

Br, Bz, Pl

### Universal Stop

Supplied with Torx Screws upon request at extra charge. See 1215CKU Brochure.

|                |               |               |
|----------------|---------------|---------------|
| <b>TRIMCO#</b> | <b>1211CH</b> | <b>1211CL</b> |
| R              | 3/4"          | 1/2"          |

Al

### Carpet Riser

Specify Stop Finish

|                |                |                |
|----------------|----------------|----------------|
| <b>TRIMCO#</b> | <b>W1211CL</b> | <b>W1211CH</b> |
| OA             | 1" x 2-1/16"   | 1" x 2-1/16"   |
| R              | 5/8"           | 3/4"           |

Riser for the W1211

Al

### Carpet Riser

Specify Stop Finish



|                |                 |                 |                 |
|----------------|-----------------|-----------------|-----------------|
| <b>TRIMCO#</b> | <b>1214</b>     | <b>1214H</b>    | <b>1214CK</b>   |
| B              | 1-3/4" x 2-1/2" | 1-3/4" x 2-1/2" | 1-3/4" x 2-1/2" |
| H              | 1-3/4"          | 2-1/4"          | 2-1/4"          |

Supplied with  
Torx Screws

|      |        |
|------|--------|
| BHMA | L02121 |
|------|--------|

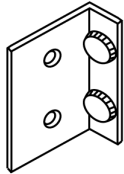
Br, Bz, Pl

### Door Stop - Cast - Heavy Duty. (3 fasteners)

1214CK is a heavy duty, high-abuse, school design which reduces tampering and loss of rubber bumper when mounted to the 1268CK. (requires 3" diameter cored hole in concrete)



# STOPS



1217P

| TRIMCO# | 1217P         | 1217S        |
|---------|---------------|--------------|
| OA      | 1-1/2" x 2"   | 1-1/2" x 2"  |
|         | Pair of Doors | Single Doors |

Br, Bz, PI, SS

### Angle Stop

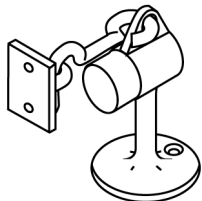
For use on  
Stopless Frames



| TRIMCO# | 1220-5      | 1221-4       | 1221-4FF    |
|---------|-------------|--------------|-------------|
| B       | 1-3/8" x 2" | 1-3/8" x 2"  | 1-3/8" x 2" |
| H       | 5-25/32"    | 4-27/32"     | 4-27/32"    |
| F       | Full Finish | Spray Finish | Full Finish |
| BHMA    | L01391      | L01381       | L01381      |

Br, Bz, PI

### Door Holder - Cast



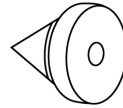
| TRIMCO#   | 1224          | 1224-5        |
|-----------|---------------|---------------|
| B         | 2-1/4"        | 2-7/8"        |
| H         | 3-5/8"        | 5-3/4"        |
| FASTENERS | Combo Pack    | Combo Pack    |
| EYE       | 7/8" x 1-1/2" | 7/8" x 2-1/4" |
| HOOK      | 2-3/4"        | 2-3/4"        |
| BHMA      | L01371        | L01371        |

Br, Bz, PI

### Floor Stop / Holder - Cast

Combo Pack. For surface mounting using wood screws, use 1223.

# ADAPTERS, STOPS AND SILENCERS

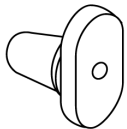


**TRIMCO # 1229A**

|      |             |
|------|-------------|
| OA   | 1/2" x 1/2" |
| BHMA | L03011      |

**Silencers for Metal Frames**

Sold in multiples of 100



**TRIMCO# 1229B**

|      |             |
|------|-------------|
| OA   | 5/8" x 3/4" |
| BHMA | L03021      |

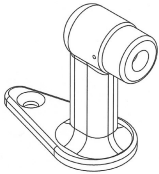
Sold in multiples of 100

**TRIMCO# 1229EL**

|   |        |
|---|--------|
| H | 1/4"   |
| D | 1-1/8" |

**Elevator Bumper - Grey**

Sold in multiples of 125



**TRIMCO# 1231**

|      |                 |
|------|-----------------|
| B    | 1-5/8" x 2-1/2" |
| H    | 2"              |
| BHMA | L02181          |

**1233**

|      |                 |
|------|-----------------|
| B    | 1-3/8" x 2-3/4" |
| H    | 2-7/8"          |
| BHMA | L02181          |

Br, Bz, PI

**Floor Stop - Cast**

Combo Pack



**TRIMCO# 1234**

|      |                 |
|------|-----------------|
| B    | 1-1/2" x 2-3/4" |
| H    | 3"              |
| STR  | 1" X 2"         |
| BHMA | L01361          |

Br, Bz, PI

**Floor Stop, Holder - Cast**

Combo Pack



**TRIMCO# 1235**

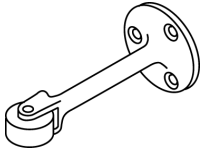
|      |          |
|------|----------|
| B    | 1-3/8"   |
| P    | 2-15/16" |
| BHMA | L02041   |

Br, Bz, PI

**Base Stop - Cast**

WS

# STOPS / HOLDERS



| TRIMCO# | 1244    | 1244-6 |
|---------|---------|--------|
| B       | 2"      | 2"     |
| P       | 4-1/4"  | 6"     |
| BHMA    | L02191` | L02201 |

Bz., PI

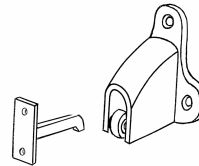
**Roller Stop - Cast**



| TRIMCO# | 1245              |
|---------|-------------------|
| B       | 1-11/16" x 2-1/4" |
| P       | 3"                |
| BHMA    | L02211            |

Br, Bz, PI

**Roller Stop - Cast**



| TRIMCO# | 1254            |
|---------|-----------------|
| OA      | 2-3/4" x 2-1/2" |
| STR     | 1" x 2"         |
| STR-P   | 2-1/8"          |
| BHMA    | L01291          |

Br, Bz, PI

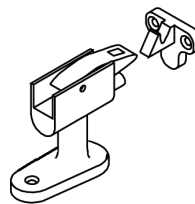
**Holder / Wall Strike - Cast  
Combo Pack**



| TRIMCO# | 1255    |
|---------|---------|
| L       | 7-1/16" |
| W       | 2-7/16" |
| TH      | 1-3/4"  |
| BHMA    | L01411  |

Br, Bz, PI

**Plunger Door Holder - Cast**  
Extra rugged cast brass or bronze



| TRIMCO# | 1257M           |
|---------|-----------------|
| B       | 3-1/4" x 1-3/4" |
| H       | 2-3/4"          |
| STR     | 1-5/8" x 2"     |
| BHMA    | L01241          |

Br, Bz, PI

**Heavy Duty Floor Stop - Cast**  
MS & ES



| TRIMCO# | 1257R       |
|---------|-------------|
| OA      | 6" x 8-3/8" |
| H       | 5"          |
| BHMA    | L01241      |

Al

**Riser for the 1257 Series Stop**  
**Cast**  
Sprayed to match

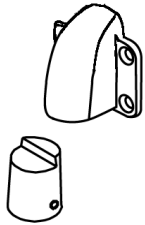


| TRIMCO# | 1258M           |
|---------|-----------------|
| B       | 3-1/4" x 1-3/4" |
| H       | 2-3/4"          |
| STR-D   | 1-1/4"          |

Br, Bz, PI

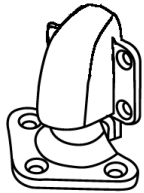
**Heavy Duty Floor Stop - Cast**  
MS & ES

# SPECIAL STRIKES AND HOLDERS



**TRIMCO# 1260WP**  
 BODY 3-1/16" x 3-1/2" Br, Bz, PI

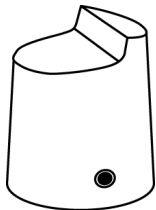
**Holder with Pipe Adapter Strike**  
**Cast**  
 Drilled for 3/4" IPS  
 (pipe not supplied)



| TRIMCO#  | 1260W            | 1261             | 1263             | 1265             | 1267             |
|----------|------------------|------------------|------------------|------------------|------------------|
| OA       | 3-1/16" x 3-1/2" | 3-1/16" x 3-1/2" | 3-1/16" x 3-1/2" | 3-1/16" x 3-1/2" | 3-1/16" x 3-1/2" |
| C        |                  | 1/2"             | 9/16" - 1-1/16"  | 1-1/8" x 1-9/16" | 1-5/8" x 2-1/16" |
| P-Holder | 2"               | 2"               | 2"               | 2"               | 2"               |
| P-Strike | 2-1/2"           | 1-1/4"           | 1-3/4"           | 2-1/4"           | 2-3/4"           |
| BHMA     | L01301           | L01301           | L01301           | L01301           | L01301           |
|          | Wall Strike      | Floor Strike     | Floor Strike     | Floor Strike     | Floor Strike     |

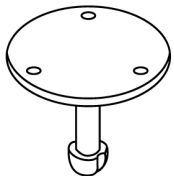
Br, Bz, PI

**Door Holder and Strike - Cast**



**TRIMCO# 1260P**  
 OA 1-1/2" x 1-3/4"  
 BHMA L01331 Bz, PI

**Pipe Adapter Strike - Cast**  
 For installation where door swings  
 over a step 3/4" IPS.  
 (pipe not supplied)



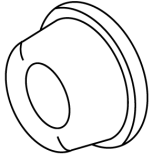
| TRIMCO# | 1268   | 1268CK |
|---------|--------|--------|
| D       | 4"     | 2-3/4" |
| H       | 3-5/8" | 3-5/8" |

AI

Installed in wet cement

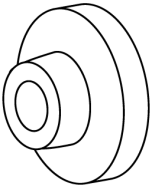
Drilled and tapped for the 1214CK  
 Requires 3" diameter cored hole in  
 concrete. Not installed in wet cement.

**Plate Adapter - Cast**  
 Sprayed to match stop.



| TRIMCO#  | 1271SA        | 1271TB           | 1271CP     |
|----------|---------------|------------------|------------|
| ID       | 1-1/4"        | 1-1/4"           | 1-1/4"     |
| OD       | 1-7/8"        | 1-7/8"           | 1-7/8"     |
| P        | 11/16"        | 11/16"           | 11/16"     |
| FASTENER | Self Adhesive | Toggle Bolt / WS | Combo Pack |
| COLOR    | Grey          | Grey             | Grey       |

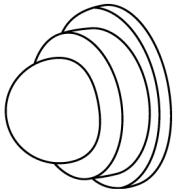
**Rimless Rubber Wall Bumper**



| TRIMCO# | 1270CV     | 1270WV         | 1270CX     | 1270WX         |
|---------|------------|----------------|------------|----------------|
| ID      | 1-3/8"     | 1-3/8"         | 1-3/8"     | 1-3/8"         |
| OD      | 2-3/16"    | 2-3/16"        | 2-3/16"    | 2-3/16"        |
| P       | 1"         | 1"             | 1"         | 1"             |
| M       | Cast       | Wrought        | Cast       | Wrought        |
| BHMA    | L02251     | L02251         | L02101     | L02101         |
|         | Br, Bz, Pl | Br, Bz, Pl, SS | Br, Bz, Pl | Br, Bz, Pl, SS |

**Wall Bumper - Combo Pack**

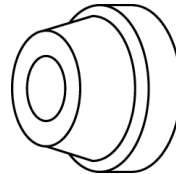
Anti-Vandal Rubber  
 Convex (X) available.  
 Concave (V) shown  
 Come with our combo pack



| TRIMCO# | 1275RP |
|---------|--------|
| ID      | 9/16"  |
| OD      | 1"     |
| P       | 9/16"  |
| BHMA    | L02101 |

Br, Bz, Pl

**Small Wall Bumper**  
 WS x RP

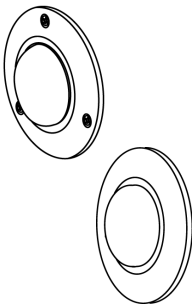


| TRIMCO# | 1278CX |
|---------|--------|
| OD      | 1-1/2" |
| P       | 1"     |
| BHMA    | L02101 |

Br, Bz, Pl, Al

**Wall Bumper**

WS x RP. Minimal Trim.  
 Anti-Vandal Rubber.  
 Concave (V) shown  
 Convex (X) available  
 Please specify fasteners as below\*



| TRIMCO# | 1277/79       |
|---------|---------------|
| D       | 4"            |
| P       | 3/4"          |
| BHMA    | L02111/L02101 |

Br, Bz, Pl

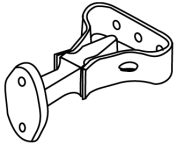
**Large Wall Bumper - Cast**

Available with concealed or exposed fasteners. Convex (X) only.  
 Please specify fasteners as below\*

**\*New Wall Bumper Abbreviations:**

- |                  |                    |
|------------------|--------------------|
| C = Cast         | MS = Machine Screw |
| W = Wrought      | CP = Combo Pack    |
| X = Convex       | WS = Wood Screw    |
| V = Concave      | RP = Rawl Plug     |
| TB = Toggle Bolt |                    |

# HOLDERS / STOPS



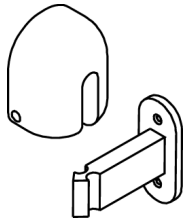
|                |                    |
|----------------|--------------------|
| <b>TRIMCO#</b> | <b>L1280</b>       |
| OA             | 3/4" x 2-1/4" x 2" |
| STR            | 5/8" x 2-13/16"    |
|                | Br, Bz, PI         |

**Door Holder - Cast**



|                |                    |                               |
|----------------|--------------------|-------------------------------|
| <b>TRIMCO#</b> | <b>1282</b>        | <b>1282CI</b>                 |
| OA             | 3/4" x 2-1/4" x 2" | 3/4" x 2-1/4" x 2"            |
| STR            | 2-1/2" x 1-5/8"    | 2-1/2" x 1-5/8"               |
|                | Br, Bz, PI         | Cast Iron<br>Sprayed to Match |

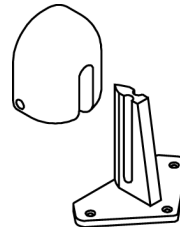
**Door Holder - Cast**  
Specify fastenings



|                |                          |
|----------------|--------------------------|
| <b>TRIMCO#</b> | <b>1283-4S</b>           |
| OA             | 2-1/4" x 2-3/4" x 1-1/2" |
| STR            | 3" Wall                  |
| BHMA           | L01301                   |
|                | Br, Bz, PI               |

**"Adjustre" Holder Body and Wall Strike - Cast**

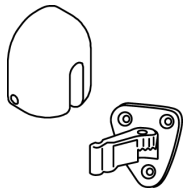
The self-adjusting "Adjustre" compensates for door sag both horizontally and vertically.  
Patent #3129024



|                |                          |
|----------------|--------------------------|
| <b>TRIMCO#</b> | <b>1283-2S</b>           |
| OA             | 2-1/4" x 2-3/4" x 1-1/2" |
| STR            | 3" Floor                 |
| BHMA           | L01301                   |
|                | Br, Bz, PI               |

**"Adjustre" Holder Body and Floor Strike - Cast**

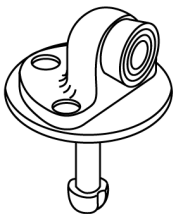
The self-adjusting "Adjustre" compensates for door sag both horizontally and vertically.  
Patent #3129024



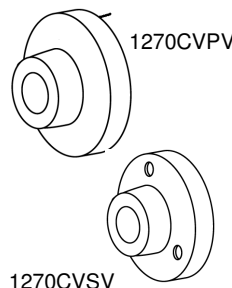
|                |                          |
|----------------|--------------------------|
| <b>TRIMCO#</b> | <b>1283-6S</b>           |
| OA             | 2-1/4" x 2-3/4" x 1-1/2" |
| STR            | 3-1/8" x 2-7/8"          |
|                | Br, Bz, PI               |

**"Adjustre" Holder Body and Pivoting Wall Strike - Cast**

Use pivoting strike to take care of any difficult opening angle hold open position. Wall mount only.



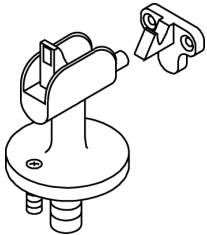
|   |                        |
|---|------------------------|
| <b>TRIMCO#</b>  | <b>1214CK x 1268CK</b> |
| OA  | 5-7/8" x 2-1/2"        |
| <b>Heavy-Duty Stop</b>  |                        |
| Pinned, screwed and recessed rubber resists vandalism. Torx. Requires 3" diameter cored hole and Quick-crete. |                        |



|   |                 |
|---|-----------------|
| <b>TRIMCO#</b>  | <b>1270CVPV</b> |
| <b>Wall Bumper</b>  |                 |
| Vandal Proof. Rubber can not be removed; Anti-Rotation Pin. |                 |
| 1270CVSV (School Version)                                   |                 |
| Stop available.   |                 |
| See Brochure.   |                 |
| Patent applied for.   |                 |

1270CVSV

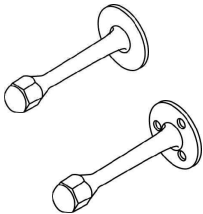
# HOLDERS / STOPS



|                |                |
|----------------|----------------|
| <b>TRIMCO#</b> | <b>1290</b>    |
| B              | 4-1/2"         |
| STR            | 15/8" x 2-1/8" |
| H              | 4-7/8"         |
| BHMA           | L01251         |

Br, Bz, Pl

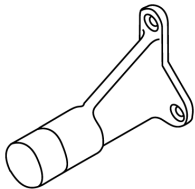
**Floor Stop & Holder - Cast**  
Heavy Duty



|                |             |
|----------------|-------------|
| <b>TRIMCO#</b> | <b>1296</b> |
| B              | 2"          |
| P              | 4-1/4"      |
| BHMA           | L02031      |

Br, Bz, Pl

**Base Stop - Cast**  
Single Hanger Bolt.  
Add suffix "S" to specify  
3-hole surface mount

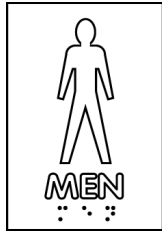


|                |                 |
|----------------|-----------------|
| <b>TRIMCO#</b> | <b>1298</b>     |
| B              | 2-1/4" x 2-5/8" |
| P              | 4-3/16"         |

Br, Bz, Pl

**Door Stop - Cast**  
Extra rugged,  
three point fastening  
Anti-Vandal

# RESTROOM SIGNS



**TRIMCO#** 507  
 OA 6" x 9"  
 SYM Men/Braille

**Restroom Sign  
 ADA**



**TRIMCO#** 508  
 OA 6" x 9"  
 SYM Women/Braille

**Restroom Sign  
 ADA**



**TRIMCO#** 509  
 OA 8" x 9"  
 SYM Unisex/Braille

**Restroom Sign  
 ADA**



**TRIMCO#** 527  
 OA 6" x 9"  
 SYM Men/Handicap/  
 Braille

**Restroom Sign  
 ADA**



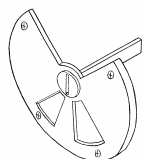
**TRIMCO#** 528  
 OA 6" x 9"  
 SYM Women/  
 Handicap/  
 Braille

**Restroom Sign  
 ADA**



**TRIMCO#** 529  
 OA 8" x 9"  
 SYM Unisex/  
 Handicap/  
 Braille

**Restroom Sign  
 ADA**



**TRIMCO#** 5004

**Mortise Lock Indicator**  
 Red signifies Locked  
 Green signifies Unlocked  
 Emergency Access  
 Available. Can be  
 customized for most  
 locksets.



# HANDICAP RESTROOM SIGNS



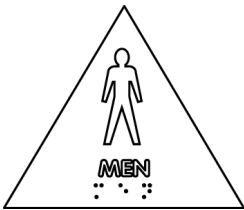
**TRIMCO# 751**  
 OA 8" Square  
 SYM Handicap

**Handicap Sign**  
 1/8" Engraved Sign



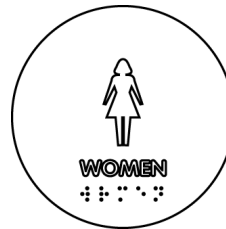
**TRIMCO# 752**  
 OA 12" Circle  
 SYM Unisex

**Restroom Sign**  
 1/4" Material  
 Title 24 Signage



**TRIMCO# 753**  
 OA 10-3/8" x 12"  
 SYM Men

**Restroom Sign**  
 1/4" Material  
 Title 24 Signage



**TRIMCO# 754**  
 OA 12" Circle  
 SYM Women

**Restroom Sign**  
 1/4" Material  
 Title 24 Signage

NOTE: All signs are raised white letters and figures, with Braille, on blue plastic grade 2 and supplied with 2-sided mounting tape.  
 Other symbols and combinations available. Please inquire.



| TRIMCO# | 755    | 756    |
|---------|--------|--------|
| D       | 2-5/8" | 2-5/8" |
| E       | Push   | Pull   |

Br, Bz, SS

**Indicator Plate**  
 1/8" material. Adhesive mount.



| TRIMCO# | 757             | 758             |
|---------|-----------------|-----------------|
| OA      | 1-1/2" x 3-3/8" | 1-1/2" x 3-3/8" |
| E       | Push            | Pull            |

Br, Bz, SS

**Indicator Plate**  
 1/8" material. Adhesive mount.  
 Add "V" for vertical orientation.



| TRIMCO# | 760                     | 793        |
|---------|-------------------------|------------|
| M       | 1/8" Plastic            | 1/8" Metal |
|         | Black, Red, Blue, Brown |            |

Br, Bz, Al, SS

**Engraved Sign**

Sketch required.

Specify adhesive mount or wood screw mount when ordering.

| TRIMCO# | 771          | 773          |
|---------|--------------|--------------|
| OA      | 1-1/2" x 27" | 1-1/2" x 27" |

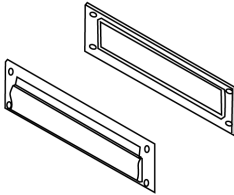
**Decal Signage**

"This door to remain unlocked during business hours"

"These doors to remain unlocked during business hours"

Decals only available in black letters on a silver background.

THIS DOORS TO REMAIN UNLOCKED DURING BUSINESS HOURS

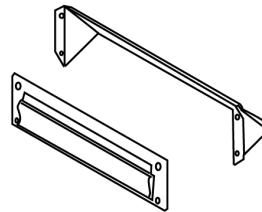


| TRIMCO# | 2082         |
|---------|--------------|
| OA      | 3-1/2" x 13" |
| BHMA    | L06032       |

Br, Bz, PI

**Mail Plate Set**

Magazine size, spring type front plate with frame inside.

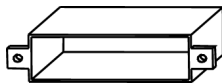


| TRIMCO# | 2085         |
|---------|--------------|
| OA      | 3-1/2" x 13" |
| BHMA    | L06032       |

Br, Bz, PI

**Mail Plate Set**

Magazine size, spring type front plate with hood inside



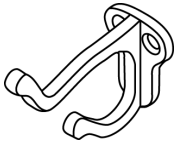
| TRIMCO# | 2091             |
|---------|------------------|
| OA      | 2-3/4" x 12-3/4" |
| SIZE    | Magazine         |

Al, SS

**Magazine Plate Sleeve**

For 1-3/4" Door.

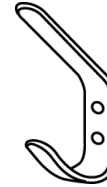
# MAIL PLATES, COAT HOOKS, OTHER



|                |                 |
|----------------|-----------------|
| <b>TRIMCO#</b> | <b>3070-1</b>   |
| B              | 1-5/8" x 1-3/8" |
| P              | 3"              |
| H              | 2-1/2"          |
| BHMA           | L03111          |

Br, Bz, PI

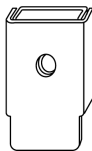
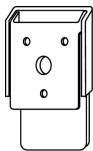
**Coat & Hat Hook - Cast**  
Burnished



|                |                        |
|----------------|------------------------|
| <b>TRIMCO#</b> | <b>3071</b>            |
| OA             | 7/8" x 5-1/2" x 1-7/8" |
| P              | 1-3/4"                 |
| M              | 3/16"                  |
| BHMA           | L03111                 |

Br, Bz, PI, SS

**Coat & Hat Hook**  
Attractive and Rugged



| TRIMCO#   | 625CV       | 625CVE       | 625V        | 625VE       |
|-----------|-------------|--------------|-------------|-------------|
| OA        | 3-7/8" x 2" | 3-7/8" x 2"  | 3-1/4" x 2" | 3-1/4" x 2" |
| Knocker   | Card Holder | Card Holder  | Viewer      | Viewer      |
| Includes: | w/Viewer    | w/Eng/Viewer |             |             |
| BHMA      | L03151      | L03151       | L03151      | L03151      |

Br, PI

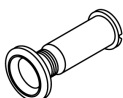
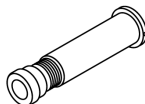
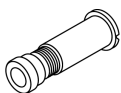
**Door Knocker - Viewer (975)**  
Modern style solid metal stamping



| TRIMCO# | 620         | 621             |
|---------|-------------|-----------------|
| OA      | 3" x 2-1/8" | 6-1/8" x 3-1/8" |
| BHMA    | L03161      | L03151          |

Br, PI

**Door Knocker**  
Engraving and Viewer Available



| TRIMCO# | 975    | 975L   | 975U   | 976    | 976U   |
|---------|--------|--------|--------|--------|--------|
| OA      | 160°   | 160°   | 160°   | 180°   | 180°   |
| BHMA    | L03172 | L03172 | L03222 | L03171 | L03221 |

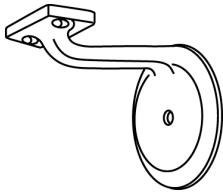
Extra Log



Br, PI

**Door Viewer**

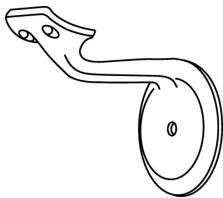
# HANDRAIL BRACKETS



|                     |             |
|---------------------|-------------|
| <b>TRIMCO# 3404</b> |             |
| B                   | 3"          |
| WC                  | 2-3/4"      |
| P                   | 3-1/4"      |
| F                   | Full Finish |
| BHMA                | L03091      |

Br, Bz, Al

**Handrail Bracket - Cast**

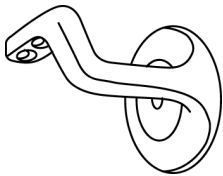


|                     |             |
|---------------------|-------------|
| <b>TRIMCO# 3405</b> |             |
| OA                  | 3" Base     |
| P                   | 3-1/2"      |
| WC                  | 2-1/2"      |
| F                   | Full Finish |
| BHMA                | L03091      |

Br, Bz, Al

**Handrail Bracket - Cast**

Fits 1-3/4" diameter rail

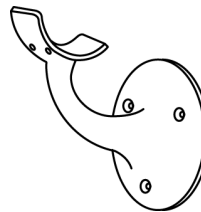


|                       |        |
|-----------------------|--------|
| <b>TRIMCO# 3401FF</b> |        |
| B                     | 3"     |
| WC                    | 2-3/4" |
| P                     | 3"     |
| BHMA                  | L03081 |

Br, Bz

**Handrail Bracket - Cast**

Fits 1-3/4" diameter wood rail

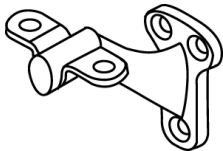


|                     |        |
|---------------------|--------|
| <b>TRIMCO# 3406</b> |        |
| B                   | 3-3/4" |
| WC                  | 3"     |
| P                   | 3-7/8" |
| BHMA                | L03081 |

Br, Bz, Al

**Handrail Bracket - Cast**

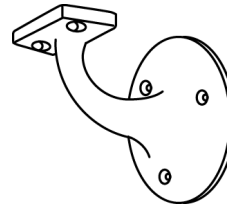
Fits 1-3/4" diameter wood rail



|                     |                 |
|---------------------|-----------------|
| <b>TRIMCO# 3408</b> |                 |
| B                   | 1-1/2" x 2-3/4" |
| WC                  | 2-5/8"          |
| P                   | 3-7/16"         |
| BHMA                | L03061          |

Br, Bz, Al

**Handrail Bracket - Cast**



|                     |        |
|---------------------|--------|
| <b>TRIMCO# 3409</b> |        |
| B                   | 3-3/4" |
| WC                  | 3-1/4" |
| P                   | 3-7/8" |

Br, Bz, Al

**Handrail Bracket - Cast**

NOTE: All of the above meet **ADA** with narrow handrail. May require additional spacer  
With wide handrail.

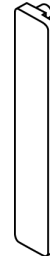
# ASTRAGALS AND GUARDS



|                |             |
|----------------|-------------|
| <b>TRIMCO#</b> | <b>4048</b> |
| OA             | 33-3/4"     |
| BHMA           | L02222      |

### Chain Crash Stop

Extra heavy-duty solid welded steel twist chain designed for heavy commercial doors. Heavy cast brass plates with heavy compression springs at each end. This product is not adjustable.



|                |                 |
|----------------|-----------------|
| <b>TRIMCO#</b> | <b>5000-T</b>   |
| OA             | 9-1/2" x 1-7/8" |
| CTC            | 8-1/2"          |

Bz, PI

### Lock Astragal - Cast

Mortise or cylindrical lock. Custom spacer available for longer lipped strikes.



|                |                 |
|----------------|-----------------|
| <b>TRIMCO#</b> | <b>5001</b>     |
| OA             | 9-1/2"          |
| CTC            | 6-1/2" & 8-1/2" |

Bz, PI

### Lock Astragal - Cast

Mortise or cylindrical lock. Custom spacer available for longer lipped strikes.

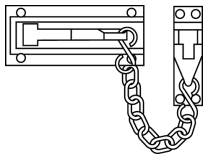


|                |                             |
|----------------|-----------------------------|
| <b>TRIMCO#</b> | <b>5002</b>                 |
| OA             | 6" x 1-9/16"                |
| CTC            | 4"                          |
| M              | 13 GA<br>Stainless<br>Steel |

SS

### Lock Astragal

Cylindrical lock only.

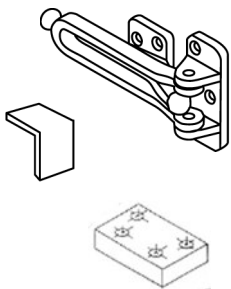


|                |                  |
|----------------|------------------|
| <b>TRIMCO#</b> | <b>4015</b>      |
| OA (plate)     | 3-3/8" x 1-7/16" |
| (chain)        | 7-1/2"           |
| (holder)       | 3/4" x 2"        |
| BHMA           | L03041           |

Br, PI

### Door Guard, Chain

All Brass except chain.



|                |                 |               |                               |
|----------------|-----------------|---------------|-------------------------------|
| <b>TRIMCO#</b> | <b>4016</b>     | <b>4016ED</b> | <b>4016-S</b>                 |
| OA             | 2-1/2" x 5-1/8" | 1" x 1/2"     | 1-7/8" x 1-1/8" x specify ht. |
| BHMA           | L03041          |               |                               |

Br, Bz, PI

Br, Bz, PI

### Door Guard - Swing Arm

Hinged bar allows guard to be positioned 180° away from door when not in use.

Optional spacers required if any applied casing involved.

Adhesive Mount  
Edge Protector  
for 4016

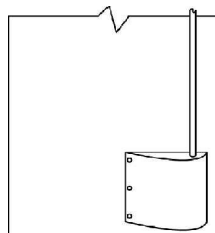
Black Nylon  
Spacer for 4016



|  |             |
|--|-------------|
| <b>TRIMCO#</b>   | <b>5022</b> |
| <b>Unit Lock Adapter</b>   |             |
| Retro-fit installation so that a cylindrical lock can replace a unit-lock. |             |

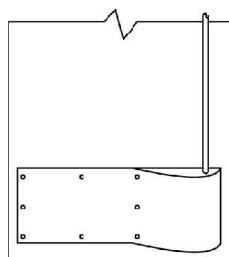


## PLATES AND GUARDS



**TRIMCO# PG8000**  
 OA 10" x 11-1/2"  
 P 3-3/16"  
 Br, Bz, SS

**Latch Guard**  
 .050

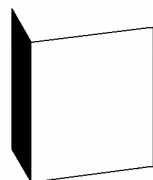


| TRIMCO# | PG8002        | PG8002-1 (2 pieces) |
|---------|---------------|---------------------|
| OA      | 10" x Specify | 10" x Specify       |
| P       | 3-3/16"       | 3-3/16"             |
| L       | Specify       | Specify             |

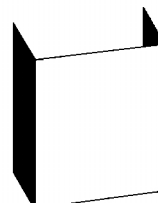
Br, Bz, SS

**PG8000 Series** Latch Guards prevent damage to lower latch of exposed-rod panic devices and shield the foot area for the wheel chair user from the lower latch protrusion.  
 Patent #DES,350-473, #5381,627

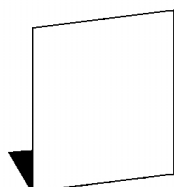
## SPECIAL PLATES



**TRIMCO# WA-A**  
**One Side Return**  
 .050



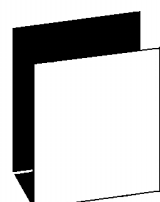
**TRIMCO# WA-B**  
**Two Side Return**  
 .050



**TRIMCO# WA-C**  
**Bottom Return**  
 .050



**TRIMCO# WA-D**  
**Side Wrap Around**  
 .050

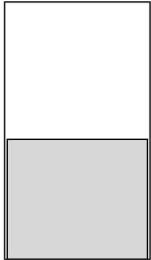


**TRIMCO# WA-E**  
**Bottom Wrap Around**  
 .050

NOTE: Furnish specifications on type, height and width of plate, door thickness and material of door and beveled doors.



## PLATES AND GUARDS

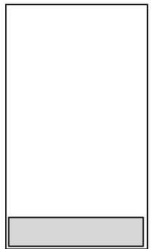


| TRIMCO# | KA038    | KA050-1  | KA050-2  | KA050-3  |
|---------|----------|----------|----------|----------|
| OA      | 17-48" H | 17-24" H | 25-42" H | 43-48" H |
| M       | .038     | .050     | .050     | .050     |
| BHMA    |          | J101     | J101     | J101     |

Br, Bz, Al, SS

**Armor Plate** SS only

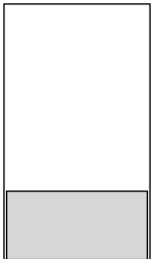
605 finish = 24" height maximum  
 606/609 finishes = 36" height maximum  
 611/612/613 finishes = 36" height maximum  
 Aluminum and SS = 48" height maximum



| TRIMCO# | KM038         | KM050         |
|---------|---------------|---------------|
| OA      | Under 6" high | Under 6" high |
| M       | .038          | .050          |
| BHMA    |               | J103          |

Br, Bz, Al, SS

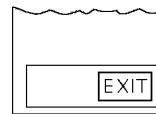
**Mop Plate** SS only



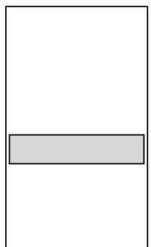
| TRIMCO# | K0038    | K0050    |
|---------|----------|----------|
| OA      | 7"-16" H | 7"-16" H |
| M       | .038     | .050     |
| BHMA    |          | J102     |

Br, Bz, Al, SS

**Kick Plate** SS only  
 Add "ILLUM" for Illuminated exit.



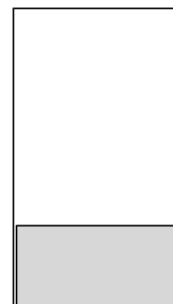
**TRIMCO# K0050.ILLUM**  
**.050 Kick Plate**  
 with an illuminated "EXIT"  
 Sign. Specify handing.



| TRIMCO# | KS050                              |
|---------|------------------------------------|
| OA      | 6" high                            |
| M       | Countersunk<br>Holes, B4E,<br>.050 |

Br, Bz, Al, SS

**Stretcher Plate - .050**  
 Other heights are  
 available.



| TRIMCO# | K6000        |
|---------|--------------|
| OA      | 4-48" high   |
| COL     | Black, Grey  |
| M       | Plastic 1/8" |
| BHMA    | J106         |

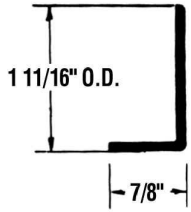
Plastic

**Kick Plate**  
 Other colors and clear are  
 available.

NOTE: All Kick plates are made from solid 260 Brass, 220 Bronze, 304 Stainless Steel or 5005H34 Aluminum. All edges are relieved. Heavy bevel at extra charge. All .038 Protection plates are Stainless Steel ONLY. Specify countersinking if required.



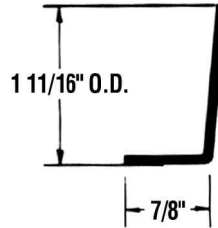
# fOCAL



|                |                 |
|----------------|-----------------|
| <b>TRIMCO#</b> | <b>KE31-1</b>   |
| OA             | 90° x up to 42" |
| OD             | 1-11/16"        |
| RET            | 7/8"            |
| BHMA           | J204            |

Br, Bz, SS

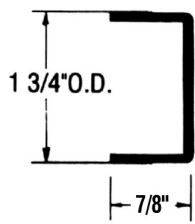
**Edge Guard** – for non-beveled stile on single acting door.



|                |                 |
|----------------|-----------------|
| <b>TRIMCO#</b> | <b>KE32-1</b>   |
| OA             | 93° x up to 42" |
| OD             | 1-11/16"        |
| RET            | 7/8"            |
| BHMA           | J205            |

Br, Bz, SS

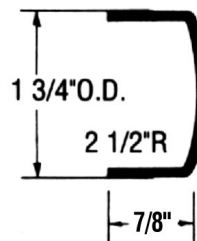
**Edge Guard** – for stile beveled 1/8" on single acting door.



|                |                 |
|----------------|-----------------|
| <b>TRIMCO#</b> | <b>KE33-1</b>   |
| OA             | 90° x up to 42" |
| OD             | 1-3/4"          |
| RET            | 7/8"            |
| BHMA           | J210            |

Br, Bz, SS

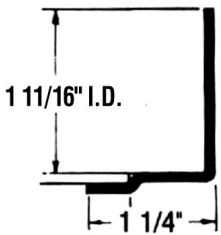
**Edge Guard** – for non-beveled stile for double acting door.



|                |                |
|----------------|----------------|
| <b>TRIMCO#</b> | <b>KE34-1</b>  |
| OA             | DA x up to 42" |
| OD             | 1-3/4"         |
| RET            | 7/8"           |
| BHMA           | J212           |

Br, Bz, SS

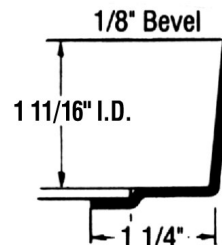
**Edge Guard** – Double Acting. For Radius stile on double acting door.



|                |                 |
|----------------|-----------------|
| <b>TRIMCO#</b> | <b>KE35-1</b>   |
| OA             | 90° x up to 42" |
| ID             | 1-11/16"        |
| RET            | 1-1/4"          |
| BHMA           | J201            |

Br, Bz, SS

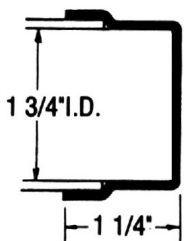
**Edge Guard** – for non-beveled stile on single acting door.



|                |                 |
|----------------|-----------------|
| <b>TRIMCO#</b> | <b>KE36-1</b>   |
| OA             | 93° x up to 42" |
| ID             | 1-11/16"        |
| RET            | 1-1/4"          |
| BHMA           | J202            |

Br, Bz, SS

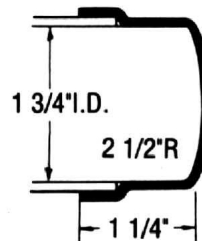
**Edge Guard** – fir stile beveled 1/8" to 2" on single acting door.



|                |                 |
|----------------|-----------------|
| <b>TRIMCO#</b> | <b>KE37-1</b>   |
| OA             | 90° x up to 42" |
| ID             | 1-3/4"          |
| RET            | 1-1/4"          |
| BHMA           | J207            |

Br, Bz, SS

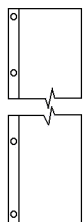
**Edge Guard** – for non-beveled stile on double acting door.



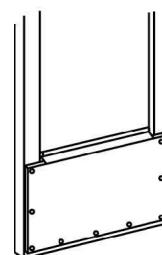
|                |                |
|----------------|----------------|
| <b>TRIMCO#</b> | <b>KE38-1</b>  |
| OA             | DA x up to 42" |
| ID             | 1-3/4"         |
| RET            | 1-1/4"         |
| BHMA           | J209           |

Br, Bz, SS

**Edge Guard** – for radius stile on double acting door.



**TRIMCO#** **K39**  
**Fingerguard** – Nursery and Pre-school item protects little fingers from getting pinched between door and jamb. Up To 48", specify height when ordering. Over 48" call for quote. Maximum length is 60"



**TRIMCO#** **KH050**

To cover glass on narrow stile aluminum doors.

NOTE: For angle edge guards, we suggest 1/16" less than door thickness. For edge guards, specify: Handing, Mortise, Non-Mortise, Bevel, Non-Bevel, No Cutouts. Need Drawing on all Cutouts and Special Screw locations. Holes are drilled approximately 3/8" from edge and spaced six inches apart. Do not pre-drill doors. Include drawings for all special screw patterns, cutouts. Over 42" by quote. Tolerance on all dimensions +/- 1/16".